

Reliability in Action

Wheeled Loader LG918



Wheeled Loader LG918

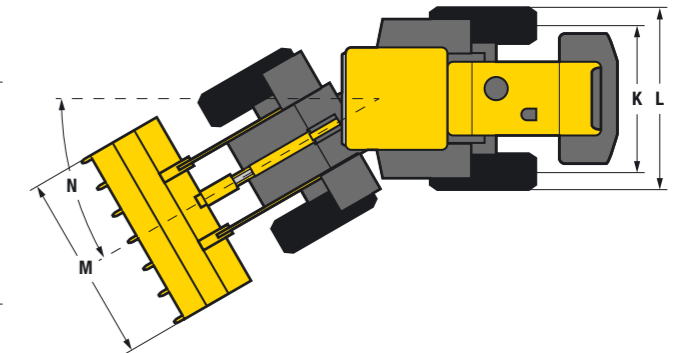
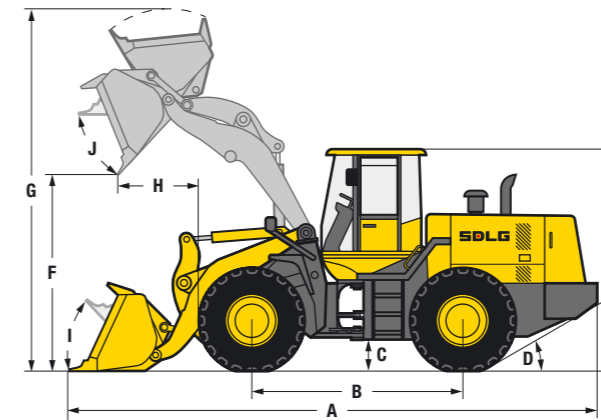


LG918

SDLG offers a competitive range of wheeled loaders that have all been tested thoroughly on high speed driving, heavy load capability, cycle times and pressure tests. All these tests are carried out vigorously by a number of dedicated technicians to make each of our wheeled loaders machines that you can rely on.

The SDLG LG918 wheeled loader offers superb traction power, excellent bucketing capability and a reliable and rigid structure. It is also a leader in fuel efficiency, offering operators more time and productivity.

- Single lever hydraulic pilot control
- 3rd hydraulic function
- Air conditioning
- ROPS/FOPS cabin
- 1 m³ bucket as standard
- Optional quick coupler
- Yuchai YC4D80-T10 engine



Description	Specification
Operating weight	6 200 kg
Standard bucket capacity	1 m ³
Lift capacity (rated load)	1 800 kg
Static tipping load at full turn	3 670 kg
Maximum breakout force	58 kN
Dimensions	
A. Overall length	5 798 mm
B. Wheel base	2 260 mm
C. Ground clearance	290 mm
D. Approach angle back	30°
E. Overall height	2 920 mm
F. Dump height	2 510 mm
G. Overall operating height	4 144 mm
H. Dump reach	920 mm
I. Roll back angle ground level	51°
J. Roll back level full height	59°
K. Track width	1 630 mm
L. Machine width	2 040 mm
M. Bucket width	2 140 mm
N. Steering angle	35°
Engine	
Model	Yuchai YC4D80-T20
Type	Watercooled, 4 stroke, 4 cylinders in line, direct injection
Rated power (SAE J1349)	58kW @ 2 400 rpm
Maximum torque	270 Nm
Cylinder bore stroke	108 / 120 mm

Description	Specification
Transmission	
Type	Countershaft-type, power shift
Number of gears	2 forward, 2 reverse
Maximum travel speed	Forward 26.5 km/h Reverse 26.5 km/h
Drive type	4 wheel drive
Tyre dimension	16 / 17 - 20
Tyre pressure	Front 48 - 51 psi Rear 39 - 42 psi
Service brake type	Dry disc brake
Parking brake	Manual
Service fill capacities	
Fuel	120 L
Hydraulic oil	100 L
Axles (main and final drives)	2 × 8 L
Engine	13 L
Transmission	45 L
Brake system	4 L
Hydraulics	
Type	Single lever hydraulic pilot control
Boom lift time	4.8 sec
Total cycle time	9.1 sec



SDLG machines are built to be like the people that own them: hardworking, genuine and reliable. Cost effective, robust machines with fuel efficient engines that are easy to operate and easy to maintain.

Everything about SDLG is designed to give you the confidence that you can complete the job to a high standard and on schedule. And when you need parts or service, you can trust your SDLG dealer to deliver on our promise.

When you buy SDLG, you're buying reliability: **Reliability in Action.**



www.sdlg.com