

Zoomlion's crane world



New Generation of **V**-series



 **ZOOMLION**

Add: No.613 of the 3<sup>rd</sup> District Furong Middle Road, Changsha, Hunan,China  
Tel: +86-731-5667238  
Fax: +86-731-5682997  
E-mail: hotline-crane@zoomlion.com  
PC: 410007

Copyright by ZOOMLION, 2009. We reserve the right to make improvements and changes to the illustration and technical parameters without notice. If there are differences between illustration and product, please refer to the product.

[www.zoomlion.com](http://www.zoomlion.com)

**ZOOMLION**

**QY50V532**

Full Hydraulic Truck Crane

Advancing with the times and wholly new upgraded  
Just for exceeding the customer's expectation!

There is no 50t crane except QY50V which can outshine other 50t cranes in the fierce market competition and win so many customers' praise and favor. Regardless of ZOOMLION H-series' luxury and elegance or V-series' fashion and avant-garde, the honor and glory of elder generation prepares the ground for QY50V to stand at a super-high start point.

Nowadays, the improved and upgraded new-generation QY50V532 truck crane, depending on its high gift for lifting and applying technology, new process and new material, develops a splendid blend of exceeding and classic. Its performance parameters, traveling parameters and working speeds all leave its competitors far behind.



Upgraded appearance  
More elegant, more open-minded and more graceful!

Outstanding functional design, amazing artistic shape and graceful integral lines outline the open-minded character of QY50V532, providing you with comfortable driving and operating feelings and admirable venerable.

- ▶ The new cabs with Chinese elements and Euramerican style combined perfectly are spacious, comfortable and of wide vision, which makes you just like driving a car. Damping seats, A/C, heater, DVD reversing system, and load moment limiter with big screen are all vividly expressions to elegant taste.
- ▶ The front cover of driver's cab, international popular designed, can be tilted upwards, convenient for maintenance and repair.
- ▶ The hood is integrally shaped and its side door can be tilted upwards 145°, convenient for maintaining the electrical system;
- ▶ The hydraulic, electrical and air lines, all optimized by three-dimensional software, are arranged clearly, orderly and reliably.
- ▶ New-type outrigger control levers and integral modeling angle indicators are neat but artistic and can stand wear and tear.



Upgraded control systems  
More accurate, smoother  
and more reliable!

Upgraded control systems, more accurate, smoother and more reliable!

Hydraulic system mainly consisting of pilot-control multiple-unit valve and free-controlled telescopic booms greatly improve QY50V532 truck crane's comfort, reliability and stability. Even if it lifts a heavy load, its accurate jogging can also be achieved.

- ▶ The load sensitive proportional-controlled multiple-unit valve effectively improves the flexibility and stability of simultaneous movements, offering you more relax operation;
- ▶ Hydraulic brake valve can control the slewing brake at any time, offering you smooth and reliable slewing;
- ▶ Hydraulic oil tank which is added with a device to warn the operator the oil filter is soiled can remind the operator to repair the filter in time;
- ▶ Hydraulic power device, improved from triple pumps to quadruple ones, can control the oil source to be independent to other working oil sources, providing the system with stable and reliable performances.





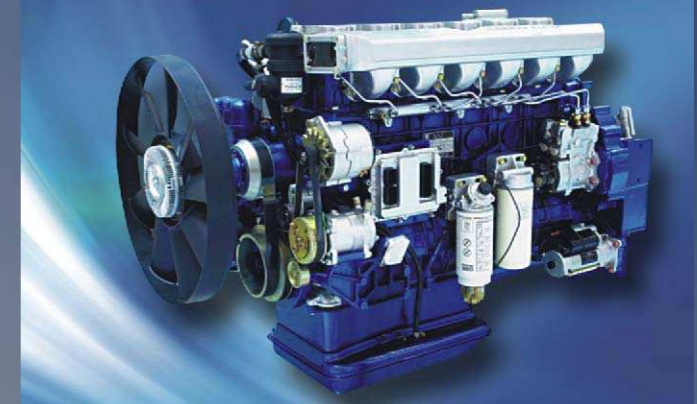
## Upgraded motive power More efficient, more energy-saving and more environmental-friendly!

Upgraded motive power makes the crane more efficient, more energy-saving and more environmental-friendly!

The wholly new "Heart" entrusts QY50V532 truck crane with great power. The outstanding intelligent engine which possesses a technical patent ensures the crane of optimized power output, low oil consumption and low cost.

- ▶ World-famous-brand intelligent and electric fuel injection engine manufactured by Weichai, conform to EURO III, is high-efficient, and environmental-friendly;
- ▶ The engine which is rigorously adjusted according to the crane's actual working conditions can obtain optimized energy-saving capacity on the prerequisite of strong power;
- ▶ Optional dual levels air filter makes the crane face the bad working conditions, such as dust environment and desert, at great ease.

Weichai intelligent and electric fuel injection engine



## Upgraded chassis More flexible, more convenient and safer!

High performance 4-axle special purpose chassis manufactured by Zoomlion ensures QY50V532 of the ability to pass any road conditions at great ease. The driver can confidently drive the vehicle at high speed, providing the driver with extreme pleasure of conquering.

- ▶ The clutch booster, installed at the bottom of the transmission, is of automatic clearance adjusting function;
- ▶ The steering system, a world advanced 120 steering gear with limit unloading function, ensures the steering system with high reliability;
- ▶ WEVB engine auxiliary brake technology, effectively reducing the wheel brakes wear and heat efficiency recession, can release the driver's fatigue during braking;
- ▶ The automatic clearance adjustment arm fitted in axle brake greatly reduces the workloads of adjusting the brake shoes manually, decreases brake faults and ensures driving security;
- ▶ Spare ABS interface in axle brake chamber can be used to install ABS system;
- ▶ The propeller shaft is connected by flange with end tooth and bolt conforming to international standard, offering you reliable connection and convenient maintenance.





# QY50V532

Technical parameters Full hydraulic truck crane

### Driver's cab

- Spacious space, wide vision
- Adjustable damping seat, UV-cut reinforced curtain, radio
- High tightness, waterproof and sound insulation

### Operator's cab

- Roomy space, wide vision, high tightness, waterproof and sound insulation
- Chassis engine controls
- High quality LCD monitor and shockproof pressure gauge with the function of working range limit and pressure detection.

We reserve the right to make improvements and changes to the illustration and technical parameters without notice. If there are differences between illustration and product, please refer to the product.

## Technical parameters

Working performance	Max. rated lifting capacity	kg	50000	
	Max. load moment of basic boom	kN.m	1764	(1470 sliding beam half extended)
	Max. load moment of Max. length boom	kN.m	940.8	(793.8 sliding beam half extended)
	Max. lifting height of basic boom	m	11.6	
	Max. lifting height of boom	m	42.1	The specifications do not include deflection of boom and jib
	Max. lifting height of jib	m	58.3	
Working speeds	Max. hoist rope speed (Main winch)	m/min	130	At 4 <sup>th</sup> layer
	Max. hoist rope speed (Auxiliary winch)	m/min	72	At 2 <sup>nd</sup> layer
	Boom derricking up time	s	50	
	Boom extending time	s	95	
	Slewing speed	r/min	0~2	
Traveling parameters	Max. traveling speed	km/h	76	
	Max. gradeability	%	30	
	Min. turning diameter	m	≤24	
	Min. ground clearance	mm	280	
	Oil consumption per hundred kilometers	L	48	
Weights	Self weight in traveling condition	kg	41000	
	Complete vehicle kerb mass	kg	40870	
	Axle load (Front)	kg	15000	
	Axle load (Rear)	kg	26000	
Dimensions	Overall dimensions (L×W×H)	mm	13300 × 2750 × 3650	
	Longitudinal distance between outriggers	m	5.92	
	Transversal distance between outriggers	m	Fully extended 6.90 Half extended 4.70	
	Tail slewing radius	mm	3820	
	Boom length	m	11.1~42.0	
	Boom angle	°	-2 ~ 80	
	Jib length	m	9.5 , 16	
Chassis	Offset	°	0 , 30	
	Model		ZLJ5414V	Code: ZLJ5414V3.7
	Type		II	
	Engine model		WP10.336	Weichai Power Co., Ltd
	Rated power	kW/r/min	247/2200	
	Max. output torque	N.m/r/min	1250/1200 - 1600	
	Limits for exhaust pollutants and smoke		Conform to related standards GB3847-2005 GB17691-2005 National Stage III	
Manufacturer		Changsha Zoomlion Heavy Industry Science & Technology Development Co., Ltd.		

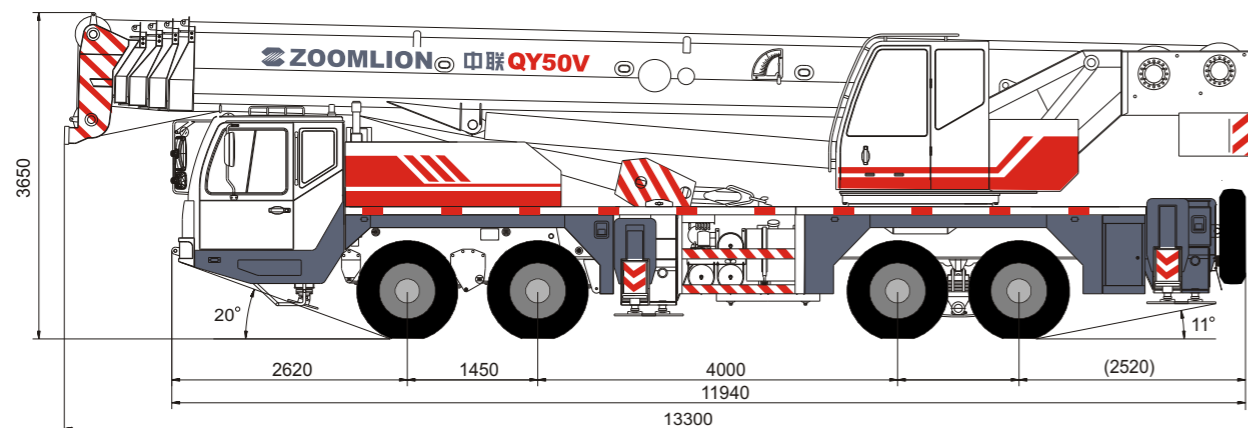
## Lifting capacity table

Unit: kg

Working radius (m)	Boom ( m )							Boom angle ( ° )	Boom + jib (m)			
	Telescopic cylinder I and outriggers fully extended, over side and over rear								42 + 9.5		42 + 16	
	11.1	15.0	18.8	24.6	30.4	36.2	42.0		0°	30°	0°	30°
3.0	50000	40000	32000					80	4500	2150	2800	1000
3.5	50000	40000	32000					78	4500	2050	2600	1000
4.0	44500	40000	32000	24000				76	4200	1950	2300	1000
4.5	40000	36000	31000	23000				74	3800	1900	2000	1000
5.0	36000	33000	29000	21800				72	3500	1850	1800	1000
5.5	32000	30000	27300	20600	16000			70	3200	1800	1650	1000
6.0	29000	27500	25700	19500	16000			68	3000	1750	1550	900
6.5	26000	25500	24200	18500	15500	12400		66	2700	1700	1450	850
7.0	24000	23500	23000	17500	14600	12400		64	2300	1650	1350	800
7.5	22300	21900	21500	16600	14000	12400		62	2000	1600	1250	750
8.0	20300	19700	19400	15800	13300	11800		60	1700	1350	1150	700
9.0	15800	15300	15000	14300	12200	10900	9000	58	1400	1100	1000	650
10.0		12200	12000	13000	11200	10000	9000	56	1150	850	850	500
11.0		9900	9700	10700	10300	9200	8300	54	950	650	650	
12.0		8200	8000	9000	9700	8500	7800	52	750	450		
14.0			5500	6500	7150	7500	6800					
16.0			3800	4800	5400	5750	6000					
18.0				3550	4150	4500	4750					
20.0				2600	3200	3500	3750					
22.0				1850	2400	2750	3000					
24.0					1800	2100	2350					
26.0						1300	1600	1850				
28.0						850	1200	1450				
30.0							850	1050				
32.0								750				
I	0	3.9	7.7	7.7	7.7	7.7	7.7					
II	0	0	0	5.8	11.6	17.4	23.2					
Reeving	12	8	8	6	4	4	3		1			
Hook	50t Main hook							4.5t Auxiliary hook				

This crane is provided with 6 lifting capacity tables according to different working conditions. The operator should select proper rated lifting load referring to resp. lifting capacity table according to actual working condition.

In above tables, the values in column "I" are the extendable length of telescopic cylinder I. The values in column "II" are 3 times extendable length of telescopic cylinder II.



## Lifting capacity table

Unit: kg

Working radius (m)	Boom ( m )						Boom ( m )				
	Telescopic cylinder   half extended and outriggers fully extended, over side and over rear						Telescopic cylinder   fully retracted and outriggers fully extended, over side and over rear				
	11.1	15.0	20.8	26.6	32.4	38.2	11.1	16.9	22.7	28.5	34.3
3.0	50000	40000	24000				50000	24000			
3.5	50000	40000	24000				50000	24000	16000		
4.0	44500	40000	24000				44500	24000	16000		
4.5	40000	36000	23000	16000			40000	23000	16000		
5.0	36000	33000	21800	16000			36000	21800	16000	12400	
5.5	32000	30000	20600	16000			32000	20600	16000	12400	
6.0	29000	27500	19500	16000	12400		29000	19500	16000	12400	
6.5	26000	25500	18500	15500	12400		26000	18500	15500	12000	
7.0	24000	23500	17500	14600	12400		24000	17500	14600	11500	
7.5	22300	21900	16600	14000	12400		22300	16600	14000	11000	8500
8.0	20300	19700	15800	13300	11800	8500	20300	15800	13300	10500	8500
9.0	15800	15300	14600	12200	10900	8500	15800	14600	12200	9500	8300
10.0		12200	13400	11200	10000	8500		14100	11200	8600	7600
11.0		9900	11100	10300	9200	7700		11700	10800	8000	7000
12.0		8200	9400	9700	8500	7200		9800	10200	7500	6500
14.0			6700	7400	7500	6200			7900	6400	5600
16.0			5000	5700	6100	5500			6200	5550	4700
18.0				4400	4800	4850			4800	4850	4100
20.0				3300	3700	4000				4200	3600
22.0				2500	2900	3200				3400	3200
24.0					2400	2600				2700	2800
26.0					1900	2100					2300
28.0						1600					1800
30.0						1200					
32.0						1000					
I	0	3.9	3.9	3.9	3.9	3.9	0	0	0	0	0
II	0	0	5.8	11.6	17.4	23.2	0	5.8	11.6	17.4	23.2
Reeving	12	8	6	4	4	3	12	6	4	4	3
Hook	50t Main hook						50t Main hook				

## Lifting capacity table

Unit: kg

Working radius (m)	Boom ( m )							Boom ( m )						Boom ( m )				
	Telescopic cylinder   fully extended and outriggers half extended, over side and over rear							Telescopic cylinder   and outriggers half extended, over side and over rear						Telescopic cylinder   and outriggers half extended, over side and over rear				
	11.1	15.0	18.8	24.6	30.4	36.2	42.0	11.1	15.0	20.8	26.6	32.4	38.2	11.1	16.9	22.7	28.5	34.3
3.0	50000	40000	32000					50000	40000	24000				50000	24000			
3.5	44000	40000	32000					44000	40000	24000				44000	24000	16000		
4.0	38000	36000	32000	24000				38000	36000	24000				38000	24000	16000		
4.5	33000	32000	31000	23000				33000	32000	23000	16000			33000	23000	16000		
5.0	27200	26600	26200	21800				27200	26600	21800	16000			27200	21800	16000	12400	
5.5	22200	21600	21300	20600	16000			22200	21600	20600	16000			22200	20600	16000	12400	
6.0	18500	18000	17700	18900	16000			18500	18000	19200	16000	12400		18500	19500	16000	12400	
6.5	15700	15200	14900	16100	15500	12400		15700	15200	16600	15500	12400		15700	17500	15500	12000	
7.0	13500	13000	12700	13900	14600	12400		13500	13000	14400	14600	12400		13500	15100	14600	11500	
7.5	11700	11300	11000	12200	12900	12400		11700	11300	12600	13100	12000		11700	13200	13800	11000	8500
8.0	10300	9900	9600	10700	11400	11800		10300	9900	11200	11900	11500	8500	10300	11800	12400	10400	8500
9.0	8000	7700	7400	8500	9100	9500	9000	8000	7700	8800	9500	10000	8500	8000	9500	10100	9500	8300
10.0		6100	5800	6800	7400	7800	8100		6100	7200	7800	8200	8300		7700	8300	8400	7600
11.0		4800	4500	5500	6000	6400	6700		4800	5900	6500	6900	7200		6400	7000	7350	6900
12.0		3800	3500	4500	5000	5400	5700		3800	4800	5400	5800	6100		5300	5900	6250	6300
14.0			2000	3000	3500	3800	4100			3200	3800	4200	4500		3700	4300	4650	4700
16.0			1000	1900	2400	2700	3000			2100	2700	3100	3400			3200	3550	3600
18.0				1100	1600	1900	2200				1800	2200	2500			2400	2700	2750
20.0					1000	1300	1550				1300	1600	1850				2050	2100
22.0						800	1000					1100	1300				1500	1550
24.0													850				1100	1150
26.0																		750
I	0	3.9	7.7	7.7	7.7	7.7	7.7	0	3.9	3.9	3.9	3.9	3.9	0	0	0	0	0
II	0	0	0	5.8	11.6	17.4	23.2	0	0	5.8	11.6	17.4	23.2	0	5.8	11.6	17.4	23.2
Reeving	12	8	8	6	4	4	3	12	8	6	4	4	3	12	6	4	4	3
Hook	50t Main hook							50t Main hook						50t Main hook				

