

# TRUCK CRANE QY25V<sub>531.5</sub>



**ZOOMLION**

Zoomlion Heavy Industry Science & Technology Co.,Ltd.

Add:Zoomlion Overseas Building, No.613, 3rd Section, Furong Middle Road, Yuhua District, Changsha, Hunan, P.R.China 410205

Copyright © 2015 Zoomlion. All rights reserved. Reproduction and copying of any part of the Contents is not allowed for any purposes without Zoomlion's written approval.  
Note: No product coating appearance shall be subject to sample.



Printed in China. VN : EN-MC-201509-01

**ZOOMLION**

[en.zoomlion.com](http://en.zoomlion.com)

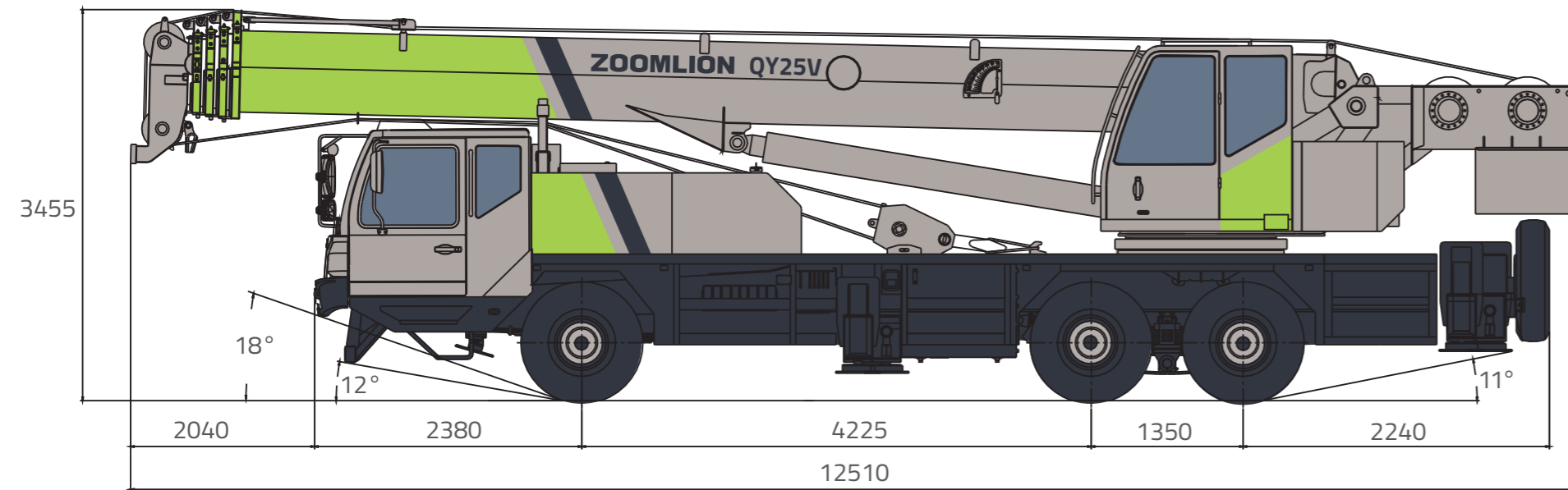
## Features

### Lifting capacity

Integrates Zoomlion more than 40 years experience in mobile cranes with advanced technology

1. Weight optimized and distortion-resistant design of low-alloy and high-strength steel providing the MAX
2. Lifting height with jib up to 46.5m
3. Higher operation/working speed
4. Profitable return on investment

## Overall View

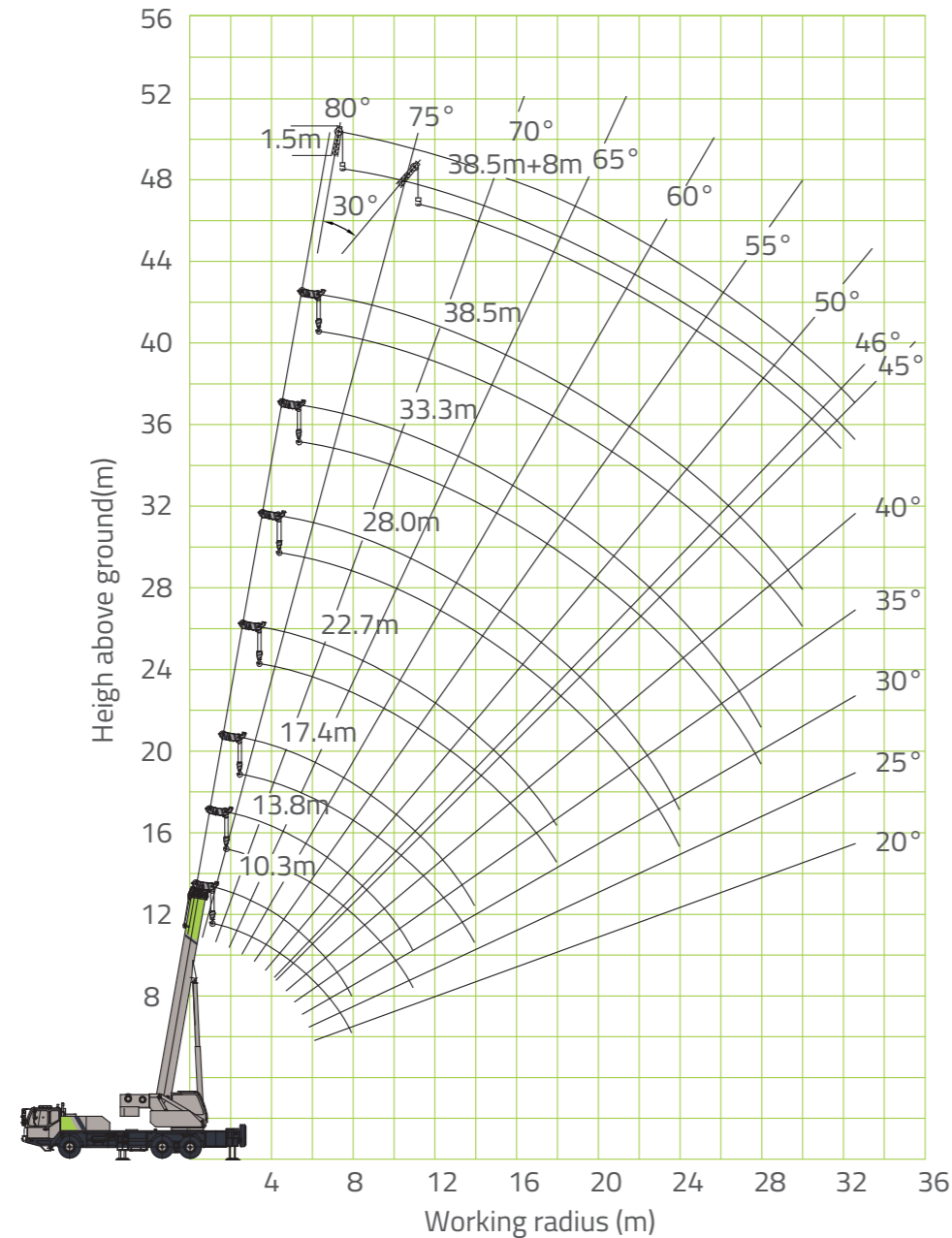


(Unit: Metric mm)

## Technical Data

Item		Unit	Value		
Work performance	Max. rated lifting capacity	kg	25000		
	Max. load moment of basic boom	kN.m	950		
	Max. load moment of main boom (fully extended)	kN.m	525		
	Max. lifting height of main boom	m	38.7	These parameters do not include deflection of main boom and jib.	
	Max. lifting height of jib	m	46.58		
Work speeds	Max. hoist rope speed (Main winch)	m/min	135	At 3 <sup>rd</sup> layer	
	Max. hoist rope speed (Auxiliary winch)	m/min	100	At 3 <sup>rd</sup> layer	
	Boom derricking up time	s	45		
	Boom telescoping out time	s	120		
	Max. slewing speed	r/min	2.6		
Driving	Max. driving speed	km/h	72		
	Max. gradeability	%	34		
	Min. turning diameter	m	≤20		
	Min. ground clearance	mm	235		
	Limits for exhaust pollutants and smoke		Comply with related standards	GB3847-2005 GB17691-2005 National stage III	
	Oil consumption per hundred kilometer	L	38		
Mass	Deadweight in driving condition	kg	29400		
	Complete vehicle kerb mass	kg	29270		
	Front axle load	kg	6370		
	Rear axle load	kg	22900		
Dimensions	Overall dimensions (L × W × H)	mm	12510×2500×3455		
	Outrigger spread (L)	m	5.15		
	Outrigger spread (W)	m	6.1		
	Main boom length	m	10.3 - 38.5		
	Boom angle	°	-2 - 80		
	Jib length	m	8		
	Offset	°	0, 30		
Chassis	Model		ZLJ5323JQZ		
	Type		II	Code: ZLJ5323JQZV3	
	Engine	Model	kw/r/min	WP6.240	
		Rated power	n.m/r/min	176/2300	
		Max. output torque		900/1400 - 1600	
Manufacturer			Zoomlion Heavy Industry Science and Technology Co., Ltd.		

# Lifting Height Chart



# Lifting Capacity Tables

Table 1

Unit: Metric kg

Table 2

Unit: Metric kg

Working radius(m)	Outriggers and telescopic cylinder I fully extended, over sides and rear						
	Main boom length 10.3 m – 38.5 m						
	10.3 m	13.8 m	17.4 m	22.7 m	28.0 m	33.3 m	38.5 m
3.0	25000	22000	18950				
3.5	24000	22000	18950				
4.0	22000	22000	17900	13950			
4.5	20000	20000	17050	12900			
5.0	19000	18500	15700	11900	10000		
5.5	16500	16500	14700	11650	9950		
6.0	15000	15000	13550	11000	9300		
6.5	13500	13500	12600	10750	8700	7200	
7.0	12500	12500	11700	10100	8350	7000	
8.0	10000	10100	10000	9150	7800	6550	
9.0	8000	8000	8000	8350	7100	6000	5500
10		6500	6500	7150	6500	5500	5100
11		5400	5300	6000	5950	5200	4600
12			4400	5100	5400	4650	4350
14			3000	3700	4100	4100	3750
16				2650	3000	3350	3100
18				1900	2250	2500	2650
20					1700	1950	2150
22					1200	1500	1700
24					850	1050	1300
26						750	950
28						500	650
30							500
I	0	3.5	7.1	7.1	7.1	7.1	7.1
II	0	0	0	5.3	10.6	15.9	21.1
Reeving	8	8	7	5	4	3	3
Hook	25 t						

Working radius(m)	Outriggers fully extended and telescopic cylinder I intermediately extended, over sides and rear					
	Main boom length 10.3 m – 34.9 m					
	10.3 m	13.8 m	19.1 m	24.4 m	29.7 m	34.9 m
3.0	25000	22000				
3.5	24000	22000	13950			
4.0	22000	22000	13950			
4.5	22000	22000	13950			
5.0	19000	18500	13950	9900		
5.5	16500	16500	12950	9900		
6.0	15000	15000	11950	9900	6950	
6.5	13500	13500	11200	9350	6950	
7.0	12500	12500	10900	8900	6950	
8.0	10000	10100	9700	8450	6700	5150
9.0	8000	8000	8450	7550	6350	5150
10		6500	7050	6800	6100	4900
11		5400	5950	6050	5550	4750
12			4900	5400	4950	4200
14			3450	3950	4050	3650
16			2550	2900	3200	3200
18			1650	2050	2650	2650
20				1500	1750	1950
22				950	1450	1650
24					1000	1250
26					700	800
28					450	650
30						
I	0	3.5	3.5	3.5	3.5	3.5
II	0	0	5.3	10.6	15.9	21.1
Reeving	8	8	5	4	3	3
Hook	25 t					



## Lifting Capacity Tables

Table 3 Unit: Metric kg

Working radius(m)	Outriggers fully extended and telescopic cylinder I intermediately extended, over sides and rear				
	Main boom length 10.3 m – 31.4 m				
	10.3 m	15.6 m	20.9 m	26.2 m	31.4 m
3.0	25000	13950			
3.5	24000	13950	9950		
4.0	22000	13950	9950		
4.5	20000	13950	9950		
5.0	19000	13950	9950	6950	
5.5	16500	13950	9950	6950	
6.0	15000	13950	9950	6950	
6.5	13500	13500	9950	6950	
7.0	12500	12500	9950	6950	
8.0	10000	10500	9400	6650	5150
9.0	8000	9000	8750	6200	4700
10		7450	7900	5650	4450
11		6150	6650	5100	4150
12		5200	5550	4500	3950
14		3750	4350	3850	3400
16			3250	3450	2950
18			2550	2550	2500
20				2050	2100
22				1650	1750
24				1200	1400
26					1150
28					800
30					
I	0	0	0	0	0
II	0	5.3	10.6	15.9	21.1
Reeving	8	5	5	3	3
Hook	25 t				

Table 4 Unit: Metric kg

Working radius(m)	Outriggers intermediately extended and telescopic cylinder I fully extended, over sides and rear								
	Main boom length 10.3 m – 38.5 m								
	10.3 m	13.8 m	17.4 m	22.7 m	28.0 m	33.3 m	38.5 m		
3.0	25000	22000	18950						
3.5	21500	21500	18950						
4.0	20000	20000	17900	13950					
4.5	17950	17950	16400	12900					
5.0	14900	14900	14900	11900	9900				
5.5	12450	12450	12050	11400	9450				
6.0	9850	9850	10000	10750	8900				
6.5	8900	8650	8600	9300	8450	6950			
7.0	7750	7750	7250	8050	7850	6750			
8.0	5700	5450	5400	6100	6200	6200			
9.0		4200	4150	4800	5150	5400	4750		
10		3150	3100	3650	4200	4450	4400		
11			2250	3000	3350	3700	3850		
12			1700	2250	2750	3050	3300		
14			850	1400	1800	1950	2250		
16				750	1100	1300	1600		
18					650	850	1000		
20							650		
22									
I	0	3.5	7.1	7.1	7.1	7.1	7.1		
II	0	0	0	5.3	10.6	15.9	21.1		
Reeving	8	8	7	5	4	3	3		
Hook	25 t								

## Lifting Capacity Tables

Table 5 Unit: Metric kg

Working radius(m)	Outriggers and telescopic cylinder I intermediately extended, over sides and rear					
	Main boom length 10.3 m – 34.9 m					
	10.3 m	13.8 m	19.1 m	24.4 m	29.7 m	34.9 m
3.0	25000	22000				
3.5	21500	21500	13950			
4.0	20000	20000	13950			
4.5	17950	17950	13950			
5.0	14900	14900	13950	9900		
5.5	12450	12000	12450	9900		
6.0	9850	10050	10700	9900	6950	
6.5	8900	8650	9100	9350	6950	
7.0	7750	7500	7950	8400	6950	
8.0	5700	5450	6100	6550	6750	5150
9.0		4200	4750	5100	5400	5150
10		3050	3700	4050	4350	4700
11		2450	2900	3200	3600	3950
12			2250	2700	3050	3150
14			1500	1850	2000	2200
16			900	1100	1450	1550
18				700	950	1000
20						750
22						550
I	0	3.5	3.5	3.5	3.5	3.5
II	0	0	5.3	10.6	15.9	21.1
Reeving	8	8	5	4	3	3
Hook	25 t					

Table 6 Unit: Metric kg

Working radius(m)	Outriggers intermediately extended and telescopic cylinder I fully retracted, over sides and rear				
	Main boom length 10.3 m – 31.4 m				
	10.3 m	15.6 m	20.9 m	26.2 m	31.4 m
3.0	25000	13950			
3.5	21500	13950	9950		
4.0	20000	13950	9950		
4.5	17950	13950	9950		
5.0	14900	13950	9950	6950	
5.5	12450	12900	9900	6950	
6.0	9850	10950	9900	6950	
6.5	8900	9600	9850	6950	
7.0	7750	8250	8900	6950	
8.0	5700	6500	6750	6400	4800
9.0		5150	5550	5800	4600
10		4050	4500	4850	4250
11		3400	3750	4000	4000
12			3050	3450	3550
14			2100	2450	2600
16			1500	1700	1800
18				1100	1450
20				650	1000
22					650
I	0	0	0	0	0
II	0	5.3	10.6	15.9	21.1
Reeving	8	5	5	3	3
Hook	25 t				

Table 7 Unit: Metric kg

Boom angle	Outriggers fully extended			
	Main boom + jib length 38.5 m + 8.0 m			
	0°		30°	
	Over sides and rear	Over front	Over sides and rear	Over front
80	3000	3000	1500	1500
78	3000	3000	1500	1500
76	2600	2600	1500	1500
74	2400	2100	1400	1400
72	2100	1600	1400	1200
70	2000	1200	1350	900
68	1800	900	1200	800
66	1600	600	1100	600
64	1400	400	1050	400
62	1200	300	1000	300
60	1000	200	900	200
58	800		700	
56	600		600	
54	500		500	
52	400		400	
50	350		350	
48	300			
46	200			
1 reeving				
3 t hook				