

VOLVO EXCAVATORS

EC250D, EC300D

24.5-33.4 t 207-231 hp



A PASSION FOR PERFORMANCE.

At Volvo Construction Equipment, we're not just coming along for the ride. Developing products and services that raise productivity – we are confident we can lower costs and increase profits for industry experts. Part of the Volvo Group, we are passionate about innovative solutions to help you work smarter – not harder.

Helping you to do more

Doing more with less is a trademark of Volvo Construction Equipment. High productivity has long been married to low energy consumption, ease of use and durability. When it comes to lowering life-cycle costs, Volvo is in a class of its own.

Designed to fit your needs

There is a lot riding on creating solutions that are suited to the particular needs of different industry applications. Innovation often involves high technology – but it doesn't always have to. Some of our best ideas have been simple, based on a clear and deep understanding of our customers' working lives.



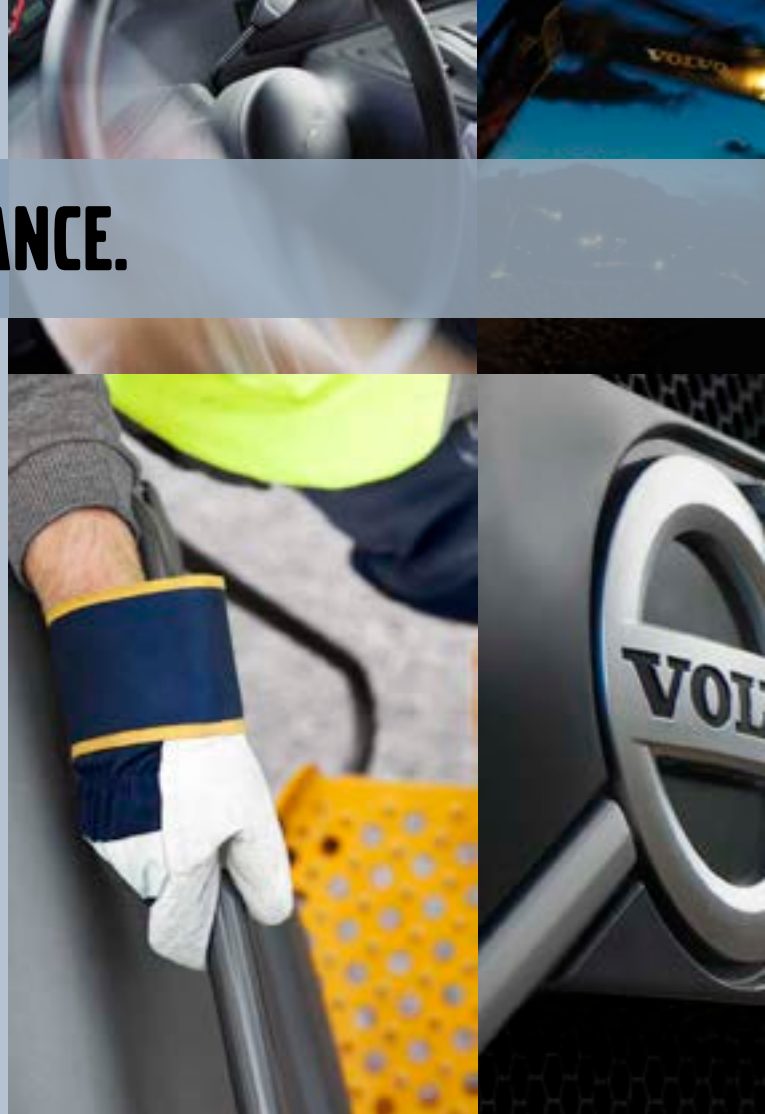
You learn a lot in 180 years

Over the years, Volvo has advanced solutions that have revolutionized the use of construction equipment. No other name speaks Safety louder than Volvo. Protecting operators, those around them and minimizing our environmental impact are traditional values that continue to shape our product design philosophy.

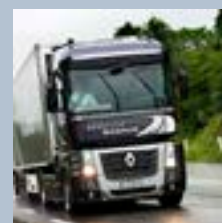
We're on your side

We back the Volvo brand with the best people. Volvo is truly a global enterprise, one that is on standby to support customers quickly and efficiently – wherever they are.

We have a passion for performance.



Volvo Trucks



Renault Trucks



Mack Trucks





UD Trucks

Volvo Buses

Volvo Construction Equipment

Volvo Penta

Volvo Aero

Volvo Financial Services

THE PLACE TO DO MORE.



When you are working comfortably, long work shifts go by quickly. You see everything clearly. Everything seems easier and you get more accomplished. That is the goal every day. Do it with Volvo.



Volvo care cab

All-day cab comfort is yours with Volvo. Expect an excellent operator environment and take command in all-around quality and ergonomic comfort. A comfortable seat, ideally-placed controls, excellent visibility and plenty of cab room. It all adds up to greater productivity, day after day.



Color I-ECU monitor

Operators always know exactly where their machine stands from a diagnostic point of view with the color I-ECU monitor. It's clear and easy to read, in all light conditions, for visual status checks. Its position from left to right is adjustable. A service mode allows engineers to perform quick diagnostic checks, helping to increase uptime and productivity. The monitor also permits rear view camera images to be displayed.

Console & switches

Everything you need is all in reach and view in the Volvo cab. The consoles and switches are conveniently located right where you want them, with your ergonomic comfort in mind. The consoles and switches are also built with quality for durability and long life.



Noise reduction

Excellent noise insulation and vibration dampening reduces fatigue and ensures high operator productivity all day long.

Viscous silicon rubber

The Volvo Care Cab is mounted on viscous, silicon rubber mounts. This system absorbs shocks, providing excellent comfort and greatly reducing whole body vibration. Also produces less noise, resulting in less fatigue and more comfort that leads to more all-day productivity.

ROPS

The cab features Roll Over Protective Structure (ROPS) safety certification. Provides more operator safety and peace-of-mind when operating in tough environments or in the event of the machine rolling over.

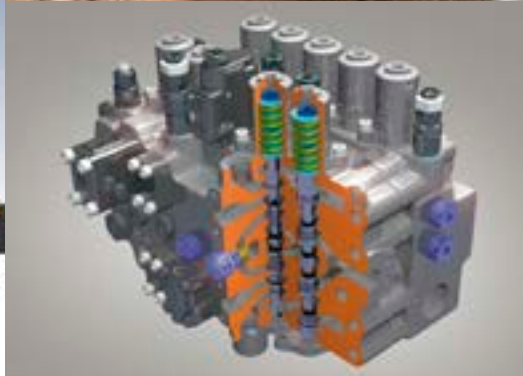
POWERED TO PERFORM.

Powerful engine

Volvo's powerful engine features increased power and torque for enhanced digging force and faster cycle times. Power has been increased by 10% in the EC250D and 11% in the EC300D. Torque is increased by 16% in the EC250D and 18% in the EC300D.

Increased performance

Perform at a higher level with increased power and speed for faster cycle times and greater productivity.



Boom float

The boom float lowers the boom simply by using gravity. As a result more flow is available to the arm circuit which ensures faster cycle times and enables grading and finishing operations to be carried out easily.

Advanced hydraulic system

Enjoy increased total performance from Volvo's smart hydraulic system. Now featuring bucket regeneration, boom priority and reduced internal losses in the hydraulic circuit for increased efficiency and productivity, as well as lower fuel consumption.





Superior performance has been built in to Volvo's EC250D and EC300D. An enhanced hydraulic system and well matched components guarantee you increased digging power. Trust Volvo to give you more.

THE RIGHT SELECTION, EVERY TIME.



Whether you and your operators think about the technological advancements that drive your Volvo Excavator or you simply want to climb in and get to it, rest assured that this machine delivers on all fronts. Earth moving brute force, backed by intelligent work modes, computerization, tracking and innovation that leads.



Selection work mode



Five working modes allow the operator to select the most appropriate mode for the application at hand. Assures the right amount of performance, along with an efficient use of fuel to suit the task.

I (Idle) stages 1 and 2 (2 being the lowest) – reduces rpm during inactive periods. Can be deselected at the press of a switch.

F (Fine) stages 1, 2 and 3 – increased hydraulic pressure via continuous Power Boost for lifting.

G (General) stages 1, 2 and 3 (1 being the highest) – G1 = good productivity and fuel consumption.

H (Heavy) – high productivity for intensive bulk earthmoving (more fuel efficient than P).

P (Power- Max) – provides additional 100rpm for absolute maximum performance.



Attachment management system

Permits storage of up to 18 different attachment presets. Enables hydraulic flow (standard) and pressure (optional) adjustments according to requirements. Operator can choose hydraulic settings that are 1-way, 2-way, push button, toggle or proportional. Allows operators to quickly change attachments without need for manual setup. This saves downtime and increases productivity. The system can be password protected to prevent possible misuse by operators or rental users with insufficient knowledge of technique.

ULTIMATE EFFICIENCY.

Fuel efficient engine

Volvo's efficient D8H Tier 4 Interim/Stage IIIB diesel engine consumes less fuel for ultimate efficiency. Cooled external Exhaust Gas Recirculation (EGR) reduces oxygen concentration in the combustion chamber and decreases the combustion temperature for lower emissions.



Diesel Particulate Filter (DPF)

The active-type DPF traps the particulate matter. The filter temporarily holds the exhaust fumes and then cleans itself by oxidizing the material in a process called regeneration. The system lowers emissions without reducing performance.



Smart DPF Regeneration

Refined computer programming alerts operators when regeneration needs to occur. Volvo's unique, operator controlled, system does not interrupt operation, performance or productivity – reducing machine downtime. Regeneration can be postponed.

Proportional controlled viscous-clutch

Optimized fan speed control from the new proportional controlled viscous-clutch for reduced fuel consumption.





Volvo prides itself on producing fuel efficient machines and the D-Series crawler excavators are a perfect example of this. Featuring Volvo's unique ECO mode, which contributes to up to 5% of the machine's total increased fuel efficiency, and smart electro-hydraulic control, these machines deliver reduced fuel consumption and cycle times as well as increased digging performance.

QUICK ACCESS UPTIME.

Volvo provides your access to more uptime. Open up the easy-to-reach compartments and quickly perform any necessary checks, replacements or services. Then get back to work. Having to do less service each day means less downtime.



Controlled cooling & Optional Reversible cooling fan

Thermostatically-controlled cooling regulates fan speed to actual cooling need, reducing fuel consumption and noise. Optional Reversible cooling fan helps prevent clogging of radiators, which can lead to overheating. Particularly helpful when operating in dusty environments. Helps extend component life, while minimizing the need for frequent manual cleaning. Can be operated through the in-cab monitor. Features three operating modes.



Grouped filters

A wide range of filter types are grouped together and accessible from ground level. This level of access makes daily checks and change outs quicker and easier, leading to more productivity. Easier access during service is also safer, with less awkward reaching and climbing around the machine.



Access

Large opening service compartment doors provide faster, safer service access. Service points are grouped and as close to ground level as possible. This helps avoid climbing to heights or working from the superstructure. Reducing service time helps to increase uptime.

360 DEGREES OF ACTION.

Working Modes

Five working modes to select the right mode and efficiency for the application at hand.

Attachment Management

Store up to 18 different password-protected attachment presets.



Productivity

From mass excavation and loading to piping and construction, you have the power and speed to do it all.

Boom Float

Lowers using only gravity, for more hydraulic flow availability and faster dig speed.

Tractive force

Travel on inclines or difficult terrain with excellent speed and tractive force.



Durability

Built to outlast. Built for your work, through and through.





Care cab

The roomy Volvo cab has it all: clear visibility, ergonomic comfort and perfectly-placed controls.

ROPS Safety

More operator safety and peace-of-mind when operating.



Technology

Designed with intelligence to help you do a variety of tasks, from heavy to fine, with a wide range of tools.

Volvo Power

Dependable power with high torque at low RPM, along with low fuel consumption, emissions and noise.



Serviceability

Fast, easy service from grouped, ground-level access.

Fuel efficiency

Superior fuel efficiency from Volvo's D8H Tier 4 Interim/Stage IIIB engine and unique ECO mode – which contributes to up to 5% of the machine's total increased fuel efficiency.

TOP PERFORMANCE DESERVES SUPPORT.

The day you receive your new Volvo Excavator is just the start of your working relationship with Volvo. From service and maintenance to our CareTrack telematics system – Volvo has a comprehensive and sophisticated aftermarket portfolio to continuously add value to your business.

Volvo designed and built your machines, so no-one knows how to keep them working in top condition more than us. When it comes to your machine, our Volvo trained technicians are the experts.

Our technicians work with industry leading diagnostic tools and techniques, using only Genuine Volvo Parts to deliver the highest levels of quality and service. Talk to your Volvo dealer about how genuine Volvo services can best provide the service and maintenance plan that is the right fit for you and your business.



State-of-the-art machines require state-of-the-art support and your Volvo dealer can provide a catalogue of services designed to get the most out of your machine, helping you maximise uptime, productivity and residual value. Your Volvo dealer can provide a number of sophisticated support offers, including:

Service plans ranging from routine wear inspections, through to comprehensive maintenance and repair agreements.

Analysis and diagnostics to help you understand how your machine is running, highlight potential maintenance issues and identify where performance can be improved.

Eco Operator training courses can help your operators work towards a safer, more productive and fuel efficient performance.



CareTrack*

Each Volvo Excavator comes standard equipped with CareTrack, the Volvo telematics system. CareTrack provides information for better planning and smarter working; including fuel consumption reports, location reports and service reminders. Save fuel. Reduce costs. Maximise profitability. You can with CareTrack.

* In markets where CareTrack is available

VOLVO EC250D, EC300D IN DETAIL.

Engine

The latest generation, Volvo engine Tier 4i (Stage IIIB) emissions compliant diesel engine fully meets the demands of the latest, emissions regulations. It is designed to deliver superior performance and fuel efficiency. The engine uses precise, highpressure fuel injectors, waste gate turbo charger and air-to-air intercooler, and electronic engine controls to optimize machine performance.

Air Filter: 3-stage with precleaner.

Automatic Idling System: Reduces engine speed to idle when the levers and pedals are not activated resulting in less fuel consumption and low cab noise levels.

EC250D

Engine Tier 4i (Stage IIIB)	Volvo	D8H
Max power at	r/s / r/min	30 / 1 800
Net, ISO 9249/SAE J1349	kW / hp	151 / 205
Gross, ISO 14396/SAE J1995	kW / hp	152 / 207
Max torque at	Nm / r/min	1 012 / 1 350
No. of cylinders		6
Displacement	l	7.8
Bore	mm	110
Stroke	mm	136

EC300D

Engine Tier 4i (Stage IIIB)	Volvo	D8H
Max power at	r/s / r/min	30 / 1 800
Net, ISO 9249/SAE J1349	kW / hp	169 / 230
Gross, ISO 14396/SAE J1995	kW / hp	170 / 231
Max torque at	Nm / r/min	1 139 / 1 350
No. of cylinders		6
Displacement	l	7.8
Bore	mm	110
Stroke	mm	136

Electrical system

High-capacity electrical system that is well protected. Waterproof double-lock harness plugs are used to secure corrosion-free connections. The main relays and solenoid valves are shielded to prevent damage. The master switch is standard.

Contronics provides advanced monitoring of machine functions and important diagnostic information on the I-ECU.

		EC250D	EC300D
Voltage	V	24	24
Batteries	V	2 x 12	2 x 12
Battery capacity	Ah	200	200
Alternator	V / Ah	28 / 110	28 / 110

Service refill capacities

Fuel tank	l	470	470
Hydraulic system, total	l	400	400
Hydraulic tank	l	195	195
Engine oil	l	32	32
Engine coolant	l	41	41
Swing reduction unit	l	5.9	6
Travel reduction unit	l	2 x 5.0	2 x 6.8

Swing system

The swing system uses an axial piston motors, driving a planetary gearbox for maximum torque. An automatic holding brake and anti-rebound valve are standard.

Max. slew speed	r/min	11.9	10.7
Max. slew torque	kNm	91.6	110.6

Drive

Each track is powered by an automatic two-speed shift travel motor. The track brakes are multi-disc, spring-applied and hydraulic released. The travel motor, brake and planetary gears are well protected within the track frame.

Max. drawbar pull	kN	217	248
Max. travel speed	km/h	3.5/5.5	3.4/5.4
Gradeability	°	35	35

Undercarriage

The undercarriage has a robust X-shaped frame. Greased and sealed track chains are standard.

Track pads		2 x 51	2 x 50
Link pitch	mm	190	203
Shoe width, triple grouser	mm	600 / 700 / 800 / 900	
Shoe width, triple grouser (HD)		-	600
Shoe width, double grouser	mm	700	700
Bottom rollers		2 x 9	2 x 9
Top rollers		2 x 2	2 x 2

Hydraulic system

The hydraulic system, also known as the "Automatic Sensing Work Mode," is designed for high-productivity, high-digging capacity, high-maneuvering precision and excellent fuel economy. The summation system, boom, arm and swing priority along with boom, arm and bucket regeneration provides optimum performance.

The following important functions are included in the system:

Summation system: Combines the flow of both hydraulic pumps to ensure quick cycle times and high productivity.

Boom priority: Gives priority to the boom operation for faster raising when loading or performing deep excavations.

Arm priority: Gives priority to the arm operation for faster cycle times in leveling and for increased bucket filling when digging.

Swing priority: Gives priority to swing functions for faster simultaneous operations.

Regeneration system: Prevents cavitation and provides flow to other movements during simultaneous operations for maximum productivity.

Power boost: All digging and lifting forces are increased.

Holding valves: Boom and arm holding valves prevent the digging equipment from creeping.

		EC250D	EC300D
Main pump, Type	2 x variable displacement axial piston pumps		
Maximum flow	l/min	2 x 240	2 x 263
Pilot pump, Type	Gear pump		
Maximum flow	l/min	18	18

Hydraulic motors

		EC250D	EC300D
Travel:	Variable displacement axial piston motor with mechanical brake		
Slew:	Fixed displacement axial piston motor with mechanical brake		
Relief valve setting			
Implement	MPa	33.3/36.3	33.3/36.3
Travel circuit	MPa	36.3	36.3
Slew circuit	MPa	27.9	27.9
Pilot circuit	MPa	3.9	3.9

Hydraulic cylinders

		EC250D	EC300D
Mono boom		2	2
Bore x Stroke	ø x mm	135 x 1 345	140 x 1 480
2 piece boom		1	1
Bore x Stroke	ø x mm	160 x 1 230	170 x 1 300
Arm		1	1
Bore x Stroke	ø x mm	140 x 1 665	150 x 1 745
Bucket		1	1
Bore x Stroke	ø x mm	130 x 1 150	140 x 1 140
Bucket for LR		1	1
Bore x Stroke	ø x mm	100 x 865	100 x 865

Cab

The operator's cab has easy access via a wide door opening. The cab is supported on hydraulic dampening mounts to reduce shock and vibration levels. These along with sound absorbing lining provide low noise levels. The cab has excellent all-round visibility. The front windshield can easily slide up into the ceiling, and the lower front glass can be removed and stored in the side door. Integrated air-conditioning and heating system: The pressurized and filtered cab air is supplied by an automatically-controlled fan. The air is distributed throughout the cab from 14 vents.

Ergonomic operator's seat: The adjustable seat and joystick console move independently to accommodate the operator. The seat has nine different adjustments plus a seat belt for the operator's comfort and safety.

Sound Level

		EC250D	EC300D
Sound level in cab according to ISO 6396			
LpA (standard)	dB(A)	70	70
LpA (tropical)	dB(A)	71	71
External sound level according to ISO 6395 and EU Noise Directive (2000/14/EC) and 474-1:2006 +A1:2009			
LwA (standard)	dB(A)	103	104
LwA (tropical)	dB(A)	104	105

SPECIFICATIONS.

VOLVO BUCKETS

Loose soil, re-handling material or abrasive rock; excavators and attachments work hand in hand to move almost any type of material. Volvo's experience together with excavator and attachment technology ensures a reduction in cycle times, increased productivity and lower fuel costs through higher breakout forces and quicker bucket fill times.

The efficiency of any type of excavation depends upon the selection of the right bucket therefore a broad bucket offering available from the same retailer as your excavator means the machine can be easily adjusted to operate in any conditions.

As the technology and experience in design for both Volvo's attachments and excavators stems from the same origin, availing from another service like Volvo's aftermarket support ensures the machine is running harder for longer.



(GP) General purpose bucket

Designed for digging and re-handling soft to medium materials e.g. soils with low wear characteristics. The GP bucket has anti-abrasive side cutters, a hardened lip plate and self-sharpening bucket teeth.

(HD) Heavy-duty bucket

Intended for digging in dense materials such as hard packed clay and gravel. The HD bucket has heavier overall fabrication with a thicker side cutting edge and hardened plating on all critical ground-engaging areas.

(RK) Rock bucket

Together with harder and thicker plating on all critical leading edges the rock bucket provides digging performance in soils with a high degree of rock content and well blasted rock. On the EC700B the option of a D-edge is available, for ease of penetration when rock handling.

(ES) Extreme service bucket

Available for the EC700 and provides additional wear protection for use in high impact or wearing applications. Inner protection and D edge as standard.

(FD) Fixed ditching bucket

A wide face, round profile and drain holes make the FD bucket ideal for ditch cleaning or removal of other soft material. An inner stiffener and optional bolt-on cutting edge bolster performance.

VOLVO TOOTH SYSTEM



Self-Sharpening Tooth System Cuts Through the Toughest Jobs

Volvo perfects the excavator bucket's point of attack with a robust tooth system that delivers performance and long life. Cast and tempered from a high-strength alloy, Volvo teeth resist stress and deliver optimum penetration in hard or abrasive material. An innovative design lessens internal wear between tooth and adapter — and makes it easy to change teeth.

LOCKING DEVICE

Patented vertical locking device. The steel pin with flexible lock retainer tightly secures the tooth to the adapter. Smart design transfers working stresses away from the locking device, saving wear on the steel pin and extending pin life. Self-sharpening Volvo teeth are designed for a small penetration area, which reduces stress and wear at the point of contact.

GPE

Self-sharpening general-purpose tooth with good penetration and long service life.

AMRE

Self-sharpening tooth resists wear in rock and other abrasive materials.

PPE

Pick-point excavator tooth delivers maximum penetration in hard clay or frozen ground.

SNE

Spade nose tooth is designed for finishing work such as leveling, grading, cleaning & backfilling.

TPE

Twin pick point with sharp, dual-point profile is ideal for compact or frozen ground.

Wear Cap & BL Adapter

The wear cap protects the adapter from unnecessary wear.

BL: 1 1/2 bottom leg adapter for welding to both sides of the cutting edge

MAXIMUM PERMITTED BUCKETS

For direct fit buckets		EC250DL									EC250DNL						
Boom	m	6.0 GP			6.0 HD		5.95 2-piece			6.0 GP			6.0 HD		5.95 2-piece		
Arm	m	H2.5	G2.97	G3.6	H2.5	H2.97	H2.5	G2.97	G3.6	H2.5	G2.97	G3.6	H2.5	H2.97	H2.5	G2.97	G3.6
Max, bucket		liter	liter	liter	liter	liter	liter	liter	liter	liter	liter	liter	liter	liter	liter	liter	liter
GP bucket 1.5 t/m ³		1 850	1 650	1 450	1 825	1 700	1 800	1 650	1 450	1 675	1 550	1 425	1 650	1 550	1 625	1 550	1 400
GP bucket 1.8 t/m ³		1 625	1 450	1 300	1 600	1 500	1 600	1 450	1 300	1 475	1 375	1 275	1 450	1 375	1 450	1 375	1 225
HD bucket 1.8 t/m ³		1 550	1 375	1 225	1 525	1 425	1 500	1 375	1 225	1 400	1 300	1 200	1 375	1 300	1 375	1 300	1 175
HD bucket 2.0 t/m ³		1 450	1 300	1 150	1 425	1 325	1 400	1 300	1 150	1 300	1 225	1 125	1 300	1 200	1 275	1 200	1 100

For S quick fit buckets		EC250DL									EC250DNL						
Boom	m	6.0 GP			6.0 HD		5.95 2-piece			6.0 GP			6.0 HD		5.95 2-piece		
Arm	m	H2.5	G2.97	G3.6	H2.5	H2.97	H2.5	G2.97	G3.6	H2.5	G2.97	G3.6	H2.5	H2.97	H2.5	G2.97	G3.6
Max, bucket		liter	liter	liter	liter	liter	liter	liter	liter	liter	liter	liter	liter	liter	liter	liter	liter
GP bucket 1.5 t/m ³		1 700	1 525	1 325	1 700	1 575	1 675	1 525	1 325	1 550	1 450	1 325	1 525	1 425	1 500	1 425	1 275
GP bucket 1.8 t/m ³		1 500	1 350	1 175	1 500	1 400	1 475	1 350	1 175	1 375	1 275	1 175	1 350	1 250	1 325	1 250	1 125
HD bucket 1.8 t/m ³		1 425	1 275	1 125	1 425	1 325	1 400	1 275	1 125	1 300	1 200	1 100	1 275	1 200	1 275	1 200	1 075
HD bucket 2.0 t/m ³		1 325	1 200	1 050	1 325	1 225	1 300	1 200	1 050	1 200	1 125	1 025	1 200	1 100	1 175	1 100	1 000

For U quick fit buckets		EC250DL									EC250DNL						
Boom	m	6.0 GP			6.0 HD		5.95 2-piece			6.0 GP			6.0 HD		5.95 2-piece		
Arm	m	H2.5	G2.97	G3.6	H2.5	H2.97	H2.5	G2.97	G3.6	H2.5	G2.97	G3.6	H2.5	H2.97	H2.5	G2.97	G3.6
Max, bucket		liter	liter	liter	liter	liter	liter	liter	liter	liter	liter	liter	liter	liter	liter	liter	liter
GP bucket 1.5 t/m ³		1 600	1 450	1 250	1 600	1 475	1 600	1 450	1 250	1 325	1 200	1 075	1 300	1 200	1 275	1 200	1 050
GP bucket 1.8 t/m ³		1 425	1 275	1 100	1 425	1 300	1 400	1 275	1 100	1 175	1 075	950	1 150	1 050	1 125	1 050	925
HD bucket 1.8 t/m ³		1 350	1 200	1 050	1 350	1 250	1 325	1 200	1 050	1 100	1 025	900	1 075	1 000	1 075	1 000	875
HD bucket 2.0 t/m ³		1 250	1 125	975	1 250	1 150	1 250	1 125	975	1 025	950	850	1 000	925	1 000	925	800

For direct fit buckets		EC300DL									EC300DNL						
Boom	m	6.2 GP			6.2 HD		6.2 2-piece			6.2 GP			6.2 HD		6.2 2-piece		
Arm	m	H2.55	G3.05	G3.7	H2.55	H3.05	H2.55	G3.05	G3.7	H2.55	G3.05	G3.7	H2.55	H3.05	H2.55	G3.05	G3.7
Max, bucket		liter	liter	liter	liter	liter	liter	liter	liter	liter	liter	liter	liter	liter	liter	liter	liter
GP bucket 1.5 t/m ³		1 950	1 775	1 575	1 925	1 700	1 900	1 725	1 550	1 725	1 575	1 425	1 725	1 525	1 700	1 550	1 375
GP bucket 1.8 t/m ³		1 725	1 575	1 400	1 700	1 525	1 675	1 525	1 375	1 525	1 400	1 250	1 525	1 350	1 500	1 375	1 225
HD bucket 1.8 t/m ³		1 625	1 500	1 325	1 625	1 425	1 600	1 450	1 300	1 450	1 325	1 175	1 450	1 275	1 425	1 300	1 150
HD bucket 2.0 t/m ³		1 525	1 400	1 250	1 500	1 350	1 500	1 350	1 200	1 350	1 250	1 100	1 350	1 200	1 325	1 200	1 075

For S quick fit buckets		EC300DL									EC300DNL						
Boom	m	6.2 GP			6.2 HD		6.2 2-piece			6.2 GP			6.2 HD		6.2 2-piece		
Arm	m	H2.55	G3.05	G3.7	H2.55	H3.05	H2.55	G3.05	G3.7	H2.55	G3.05	G3.7	H2.55	H3.05	H2.55	G3.05	G3.7
Max, bucket		liter	liter	liter	liter	liter	liter	liter	liter	liter	liter	liter	liter	liter	liter	liter	liter
GP bucket 1.5 t/m ³		1 825	1 650	1 475	1 800	1 600	1 775	1 625	1 425	1 625	1 475	1 300	1 625	1 400	1 575	1 425	1 250
GP bucket 1.8 t/m ³		1 625	1 475	1 300	1 600	1 400	1 575	1 425	1 250	1 425	1 300	1 150	1 425	1 250	1 400	1 250	1 100
HD bucket 1.8 t/m ³		1 525	1 400	1 225	1 525	1 325	1 500	1 350	1 200	1 350	1 225	1 075	1 350	1 175	1 325	1 200	1 050
HD bucket 2.0 t/m ³		1 425	1 300	1 150	1 400	1 250	1 400	1 250	1 100	1 250	1 150	1 000	1 250	1 100	1 225	1 100	975

For U quick fit buckets		EC300DL									EC300DNL						
Boom	m	6.2 GP			6.2 HD		6.2 2-piece			6.2 GP			6.2 HD		6.2 2-piece		
Arm	m	H2.55	G3.05	G3.7	H2.55	H3.05	H2.55	G3.05	G3.7	H2.55	G3.05	G3.7	H2.55	H3.05	H2.55	G3.05	G3.7
Max, bucket		liter	liter	liter	liter	liter	liter	liter	liter	liter	liter	liter	liter	liter	liter	liter	liter
GP bucket 1.5 t/m ³		1 725	1 575	1 375	1 725	1 500	1 700	1 525	1 325	1 525	1 375	1 200	1 525	1 300	1 475	1 325	1 150
GP bucket 1.8 t/m ³		1 550	1 400	1 225	1 525	1 325	1 500	1 350	1 175	1 350	1 225	1 075	1 350	1 150	1 300	1 175	1 025
HD bucket 1.8 t/m ³		1 450	1 325	1 150	1 450	1 250	1 425	1 275	1 125	1 275	1 150	1 000	1 275	1 100	1 250	1 125	975
HD bucket 2.0 t/m ³		1 350	1 225	1 075	1 350	1 175	1 325	1 200	1 050	1 200	1 075	950	1 200	1 025	1 150	1 050	900

Note: 1, Bucket size based on ISO 7451, heaped material with a 1:1 angle of repose,
 2, "Max, permitted sizes" are for reference only and are not necessarily available from the factory,
 3, Bucket widths are less than bucket's tip radius,

SPECIFICATIONS.

GROUND PRESSURE

EC250D										
Description	Shoe width	Operating weight	Ground pressure	Overall width	Operating weight	Ground pressure	Overall width	Operating weight	Ground pressure	Overall width
	mm	kg	kPa	mm	kg	kPa	mm	kg	kPa	mm
Triple grouser	600	25 485	50.3	3 190	25 335	50.0	3 190	25 885	51.1	3 190
	700	25 779	43.6	3 290	25 629	43.4	3 290	26 179	44.3	3 290
	800	26 074	38.6	3 390	25 924	38.4	3 390	26 474	39.2	3 390
	900	26 369	34.7	3 490	26 219	34.5	3 490	26 769	35.3	3 490
Double grouser	700	26 055	44.1	3 290	25 905	43.9	3 290	26 455	44.8	3 290
		EC250D with L undercarriage, 6.0m HD boom, 2.97m HD arm, 958kg bucket, 4 950kg counterweight			EC250D with L undercarriage, 6.0m boom, 2.97m arm, 958kg bucket, 4 950kg counterweight			EC250D with L undercarriage, 5.95m 2-piece boom, 2.97m arm, 958kg bucket, 4 950kg counterweight		
EC250D										
Triple grouser	600	24 785	49.0	3 190	24 635	48.7	3 190	25 185	49.8	3 190
	700	25 079	42.5	3 290	24 929	42.2	3 290	25 479	43.1	3 290
	800	25 374	37.6	3 390	25 224	37.4	3 390	25 774	38.2	3 390
	900	25 669	33.8	3 490	25 519	33.6	3 490	26 069	34.3	3 490
Double grouser	700	25 355	42.9	3 290	25 205	42.7	3 290	25 755	43.6	3 290
		EC250D with L undercarriage, 6.0m HD boom, 2.97m HD arm, 958kg bucket, 4 250kg counterweight			EC250D with L undercarriage, 6.0m boom, 2.97m arm, 958kg bucket, 4 250kg counterweight			EC250D with L undercarriage, 5.95m 2-piece boom, 2.97m arm, 958kg bucket, 4 250kg counterweight		
EC250D										
Triple grouser	600	25 400	51.2	2 990	25 250	49.9	2 990	25 800	51.0	2 990
	700	25 694	44.4	3 090	25 544	43.3	3 090	26 094	44.2	3 090
	800	25 989	39.3	3 190	25 839	38.3	3 190	26 389	39.1	3 190
	900	26 284	35.3	3 290	26 134	34.4	3 290	26 684	35.1	3 290
		EC250D with NL undercarriage, 6.0m HD boom, 2.97m HD arm, 958kg bucket, 4 950kg counterweight			EC250D with NL undercarriage, 6.0m boom, 2.97m arm, 958kg bucket, 4 950kg counterweight			EC250D with NL undercarriage, 5.95m 2-piece boom, 2.97m arm, 958kg bucket, 4 950kg counterweight		
EC250D										
Triple grouser	600	24 700	48.8	2 990	24 550	48.5	2 990	25 100	49.6	2 990
	700	24 994	42.3	3 090	24 844	42.1	3 090	25 394	43.0	3 090
	800	25 289	37.5	3 190	25 139	37.2	3 190	25 689	38.1	3 190
	900	25 584	33.7	3 290	25 434	33.5	3 290	25 984	34.2	3 290
		EC250D with NL undercarriage, 6.0m HD boom, 2.97m HD arm, 958kg bucket, 4 250kg counterweight			EC250D with NL undercarriage, 6.0m boom, 2.97m arm, 958kg bucket, 4 250kg counterweight			EC250D with NL undercarriage, 5.95m 2-piece boom, 2.97m arm, 958kg bucket, 4 250kg counterweight		
EC250D										
Triple grouser	600	27 136	54.7	3 190						
	800	27 725	41.9	3 290						
	900	28 020	37.6	3 390						
		EC250D with LR undercarriage, 10.2m LR boom, 7.85m LR arm, 454kg bucket, 6 200kg counterweight								

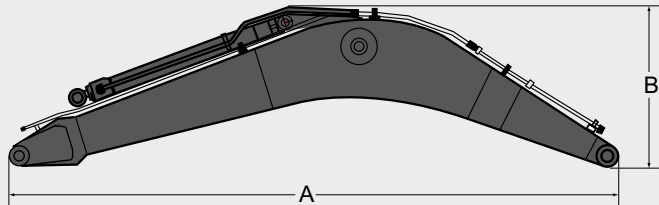
GROUND PRESSURE

EC300D											
Description	Shoe width	Operating weight	Ground pressure	Overall width	Operating weight	Ground pressure	Overall width	Operating weight	Ground pressure	Overall width	
	mm	kg	kPa	mm	kg	kPa	mm	kg	kPa	mm	
Triple grouser		600	30 102	58.1	3 190	29 802	57.5	3 190	30 752	59.3	3 190
	HD	600	30 302	58.5	3 190	30 002	57.9	3 190	30 952	59.7	3 190
		700	30 662	50.7	3 290	30 362	50.2	3 290	31 312	51.8	3 290
		800	31 032	44.9	3 390	30 732	44.5	3 390	31 682	45.8	3 390
		900	31 402	40.4	3 490	31 102	40.0	3 490	32 052	41.2	3 490
Double grouser	700	30 816	51.0	3 290	30 516	50.5	3 290	31 466	52.0	3 290	
		EC300D with L undercarriage, 6.2m HD boom, 3.05m HD arm, 1 166kg bucket, 5 100kg counterweight			EC300D with L undercarriage, 6.2m boom, 3.05m arm, 1 166kg bucket, 5 100kg counterweight			EC300D with L undercarriage, 6.2m 2-piece boom, 3.05m arm, 1 166kg bucket, 5 100kg counterweight			
EC300D											
Triple grouser		600	30 502	58.8	3 190	30 202	58.3	3 190	31 162	60.1	3 190
	HD	600	30 702	59.2	3 190	30 402	58.7	3 190	31 362	60.5	3 190
		700	31 062	51.4	3 290	30 762	50.9	3 290	31 722	52.5	3 290
		800	31 432	45.5	3 390	31 132	45.0	3 390	32 092	46.4	3 390
		900	31 802	40.9	3 490	31 502	40.5	3 490	32 462	41.8	3 490
Double grouser	700	31 216	51.6	3 290	30 916	51.1	3 290	31 876	52.7	3 290	
		EC300D with L undercarriage, 6.2m HD boom, 3.05m HD arm, 1 166kg bucket, 5 500kg counterweight			EC300D with L undercarriage, 6.2m boom, 3.05m arm, 1 166kg bucket, 5 500kg counterweight			EC300D with L undercarriage, 6.2m 2-piece boom, 3.05m arm, 1 166kg bucket, 5 500kg counterweight			
EC300D											
Triple grouser		600	29 862	57.6	2 990	29 562	57.0	2 990	30 512	58.9	2 990
	HD	600	30 062	58.0	2 990	29 762	57.4	2 990	30 712	59.3	2 990
		700	30 422	50.3	3 090	30 122	49.8	3 090	31 072	51.4	3 090
		800	30 792	44.6	3 190	30 492	44.1	3 190	31 442	45.5	3 190
		900	31 162	40.1	3 290	30 862	39.7	3 290	31 812	40.9	3 290
		EC300D with NL undercarriage, 6.2m HD boom, 3.05m HD arm, 1 166kg bucket, 5 100kg counterweight			EC300D with NL undercarriage, 6.2m boom, 3.05m arm, 1 166kg bucket, 5 100kg counterweight			EC300D with NL undercarriage, 6.2m 2-piece boom, 3.05m arm, 1 166kg bucket, 5 100kg counterweight			
EC300D											
Triple grouser		600	30 262	58.4	2 990	29 962	57.8	2 990	30 912	59.6	2 990
	HD	600	30 462	58.8	2 990	30 162	58.2	2 990	31 112	60.0	2 990
		700	30 822	51.0	3 090	30 522	50.5	3 090	31 472	52.0	3 090
		800	31 192	45.1	3 190	30 892	44.7	3 190	31 842	46.1	3 190
		900	31 562	40.6	3 290	31 262	40.2	3 290	32 212	41.4	3 290
		EC300D with NL undercarriage, 6.2m HD boom, 3.05m HD arm, 1 166kg bucket, 5 500kg counterweight			EC300D with NL undercarriage, 6.2m boom, 3.05m arm, 1 166kg bucket, 5 500kg counterweight			EC300D with NL undercarriage, 6.2m 2-piece boom, 3.05m arm, 1 166kg bucket, 5 500kg counterweight			
EC300D											
Triple grouser		600	32 032	61.8	3 190						
	HD	600	32 232	62.2	3 290						
		800	32 962	47.7	3 390						
		900	33 332	42.9	3 490						
			EC300D with LR undercarriage, 10.2m LR boom, 7.9m LR arm, 473kg bucket, 6 800kg counterweight								

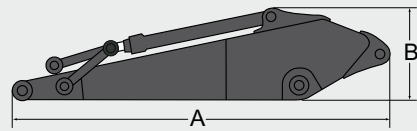
SPECIFICATIONS.

DIMENSIONS

Boom



Arm



Description	Unit	EC250D				EC300D			
		mono	mono	2-piece	Long-Reach	mono	mono	2-piece	Long-Reach
Boom	m	6.0 GP	6.0 HD	5.95	10.2	6.2 GP	6.2 HD	6.2	10.2
Length	mm	6 210	6 210	6 160	10 410	6 430	6 430	6 430	10 430
Height	mm	1 630	1 630	1 100	1 525	1 680	1 680	1 590	1 620
Width	mm	740	740	740	740	770	770	770	770
Weight	kg	2 180	2 360	2 840	3 010	2 610	2 810	3 450	3 410

* Includes cylinder, piping and pin, excludes boom cylinder pin

Description	Unit	EC250D					EC300D				
		2.5 HD	2.97 GP	2.97 HD	3.6 GP	7.85 LR	2.55 HD	3.05 GP	3.05 HD	3.7 GP	7.9 LR
Arm	m										
Length	mm	3 590	4 060	4 060	4 730	9 000	3 710	4 150	4 150	4 800	9 050
Height	mm	1 000	1 000	1 000	1 000	900	1 010	1 010	1 010	1 050	1 050
Width	mm	500	500	500	500	480	545	545	545	545	450
Weight	kg	1 350	1 340	1 420	1 478	1 720	1 465	1 530	1 590	1 660	1 730

* Includes cylinder, linkage and pin

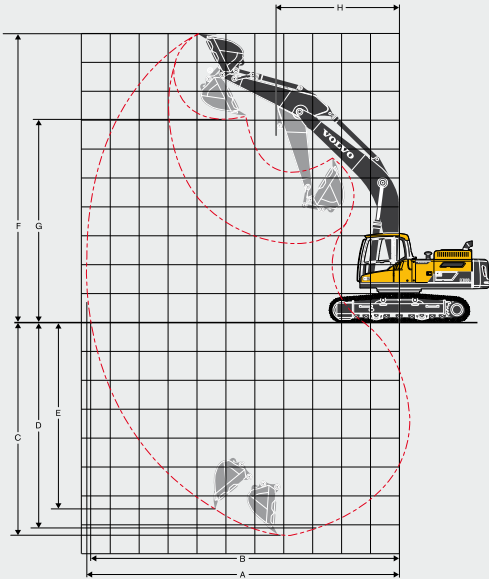
SPECIFICATIONS.

WORKING RANGES

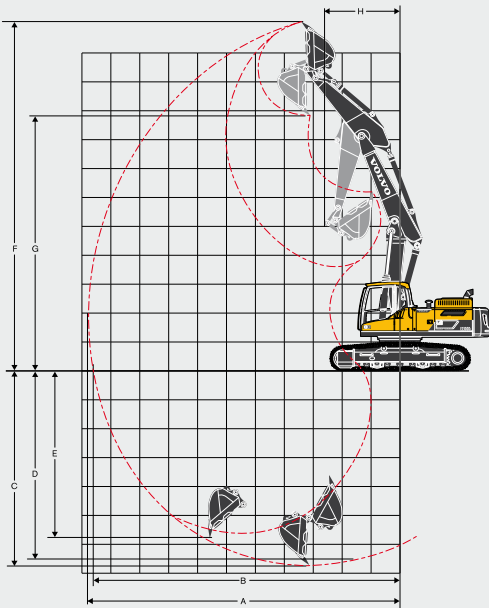
Description			Unit	EC250DL and EC250DNL					EC250DLR				
Boom			m	6.0			5.95 2-piece		10.2				
Arm			m	2.5	2.97	3.6	2.5	2.97	3.6	7.85			
A. Max. digging reach			mm	9 880	10 260	10 730	9 890	10 290	10 780	18 306			
B. Max. digging reach on ground			mm	9 690	10 080	10 560	9 710	10 110	10 610	18 207			
C. Max. digging depth			mm	6 500	6 980	7 600	6 040	6 480	7 050	14 348			
D. Max. digging depth (2.44 m level)			mm	6 280	6 740	7 380	5 930	6 380	6 950	14 234			
E. Max. vertical wall digging depth			mm	5 730	5 970	6 720	5 110	5 590	6 020	12 777			
F. Max. cutting height			mm	9 620	9 690	9 660	11 080	11 340	11 580	14 887			
G. Max. dumping height			mm	6 700	6 800	6 820	8 010	8 270	8 530	12 738			
H. Min. front swing radius			mm	3 910	3 890	3 890	2 788	2 554	2 720	5 721			
Digging forces with direct fit bucket													
Bucket radius			mm	1 537	1 537	1 537	1 537	1 537	1 537	1 537	1 537		
Breakout force - bucket			Normal	SAE J1179	kN	152	152	152	152	152	152	68.6	
			Power boost	SAE J1179	kN	166	166	166	166	166	166	166	-
			Normal	ISO 6015	kN	171	171	171	171	171	171	171	77.8
			Power boost	ISO 6015	kN	186	186	186	186	186	186	186	-
Tearout force - dipper arm			Normal	SAE J1179	kN	133	115	103	133	115	103	44.1	
			Power boost	SAE J1179	kN	145	125	112	145	125	112	-	
			Normal	ISO 6015	kN	137	118	105	137	118	105	44.7	
			Power boost	ISO 6015	kN	149	129	114	149	129	114	-	
Rotation angle, bucket			°	178	178	178	178	178	178	178	178		

Description			Unit	EC300DL and EC300DNL					EC300DLR				
Boom			m	6.2			6.2 2-piece		10.2				
Arm			m	2.55	3.05	3.7	2.55	3.05	3.7	7.9			
A. Max. digging reach			mm	10 188	10 716	11 322	10 253	10 783	11 398	18 593			
B. Max. digging reach on ground			mm	9 981	10 520	11 137	10 048	10 588	11 214	18 481			
C. Max. digging depth			mm	6 847	7 347	7 997	6 213	6 738	7 379	14 754			
D. Max. digging depth (2.44 m level)			mm	6 606	7 160	7 837	6 109	6 642	7 290	14 650			
E. Max. vertical wall digging depth			mm	5 726	6 480	7 094	5 213	5 801	6 426	13 493			
F. Max. cutting height			mm	9 662	10 079	10 363	11 595	12 100	12 601	14 938			
G. Max. dumping height			mm	6 671	7 037	7 324	8 355	8 846	9 349	12 604			
H. Min. front swing radius			mm	4 220	4 180	4 240	2 754	2 579	2 774	6 190			
Digging forces with direct fit bucket													
Bucket radius			mm	1 600	1 600	1 600	1 600	1 600	1 600	1 600	1 600		
Breakout force - bucket			Normal	SAE J1179	kN	168	168	168	168	168	168	69.1	
			Power boost	SAE J1179	kN	182	182	182	182	182	182	182	-
			Normal	ISO 6015	kN	188	188	188	188	188	188	188	80.3
			Power boost	ISO 6015	kN	205	205	205	205	205	205	205	-
Tearout force - dipper arm			Normal	SAE J1179	kN	157	132	115	157	132	115	51.3	
			Power boost	SAE J1179	kN	170	143	125	170	143	125	-	
			Normal	ISO 6015	kN	161	135	118	161	135	118	51.8	
			Power boost	ISO 6015	kN	176	147	128	176	147	128	-	
Rotation angle, bucket			°	179	179	179	179	179	179	179	179		

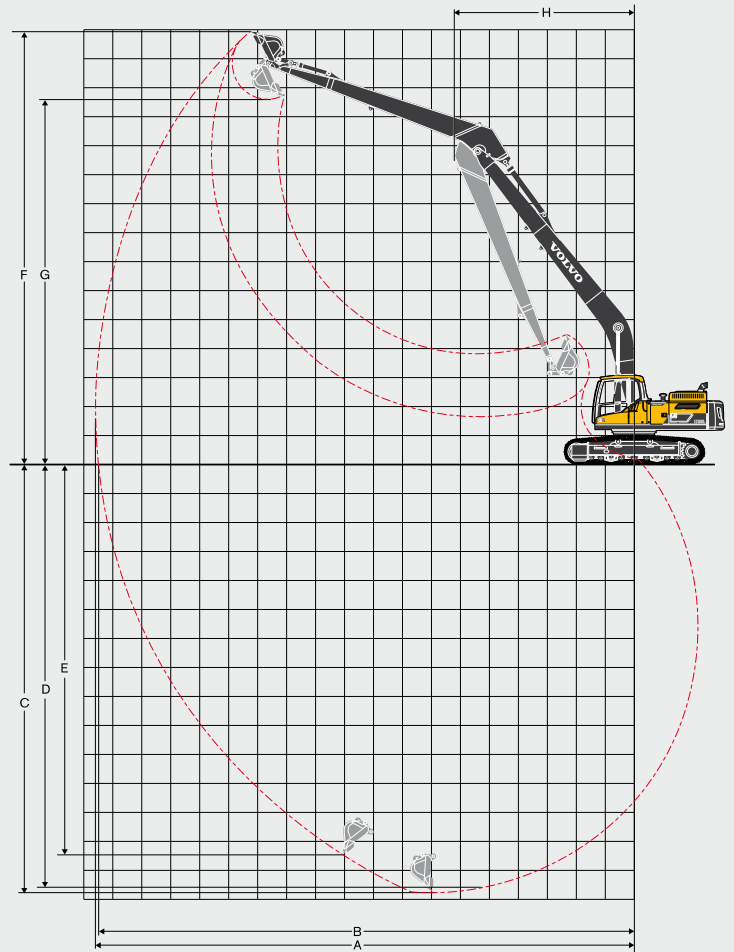
WORKING RANGES



Machine with mono boom



Machine with 2-piece boom



Machine with Long-Reach boom

EXPLANATION OF LIFTING CAPACITY TABLES

Example: • EC300DL

Lifting capacity at the arm end without bucket.

For lifting capacity including bucket, simply subtract actual weight of the direct fit bucket or the bucket with quick fit from the following values.

	Lifting hook related to ground level	Along		Across		Along		Across		Along		Across		Along		Across		Max. mm
		undercarriage 1.5 m	undercarriage 3.0 m	undercarriage 4.5 m	undercarriage 6.0 m	undercarriage 7.5 m	undercarriage 9.0 m	undercarriage Max. reach										
Boom: 6.2m	4.5 m kg	-	-	-	-	-	-	*7 420	*7 420	*6 810	5 610	*6 410	4 080	*4 750	3 780	9.4		
Arm: 3.7m	3.0 m kg	-	-	-	-	*11 690	*11 690	*8 950	7 550	*7 620	5 340	6 280	3 950	*4 880	3 500	9.7		
Shoe: 600mm	1.5 m kg	-	-	-	-	*14 520	10 710	*10 460	7 040	8 150	5 060	6 120	3 810	*5 190	3 380	9.7		
CWT: 5500kg	0 m kg	-	-	*6 750	*6 750	*16 180	10 140	11 170	6 680	7 900	4 850	6 000	3 700	5 560	3 430	9.5		
	-1.5 m kg	*6 940	*6 940	*10 970	*10 970	*16 650	9 920	10 940	6 480	7 760	4 720	5 950	3 660	5 940	3 650	9.1		

- Notes:
1. Machine in "Fine Mode-F" (Power Boost) for lifting capacities.
 2. The above loads are in compliance with SAE J1097 and ISO 10567 Hydraulic Excavator Lifting Capacity Standards.
 3. Rated loads do not exceed 87% of hydraulic lifting capacity or 75% of tipping load.
 4. Rated loads marked with an asterisk (*) are limited by hydraulic capacity rather than tipping load.

SPECIFICATIONS.

LIFTING CAPACITY EC250DL

		1.5 m		3.0 m		4.5 m		6.0 m		7.5 m		9.0 m		Max. reach		m
		Along UC	Across UC	Along UC	Across UC	Along UC	Across UC	Along UC	Across UC	Along UC	Across UC	Along UC	Across UC	Along UC	Across UC	
Boom : 6.0m	7.5 m kg	-	-	-	-	-	-	*6 820	*6 820	-	-	-	-	*6 880	*6 880	6.2
Arm : 2.5m	6.0 m kg	-	-	-	-	-	-	*6 840	*6 840	-	-	-	-	*6 880	5 260	7.3
Shoe : 600mm	4.5 m kg	-	-	-	-	*9 240	*9 240	*7 690	6 900	*7 050	4 890	-	-	6 610	4 480	8.0
CWT : 4 950kg	3.0 m kg	-	-	-	-	*11 950	9 980	*8 900	6 580	7 070	4 750	-	-	6 080	4 090	8.3
	1.5 m kg	-	-	-	-	*14 060	9 430	9 680	6 300	6 910	4 610	-	-	5 920	3 960	8.4
	0 m kg	-	-	-	-	*14 850	9 220	9 480	6 120	6 810	4 510	-	-	6 080	4 050	8.2
	-1.5 m kg	-	-	*10 430	*10 430	*14 660	9 200	9 410	6 060	6 790	4 490	-	-	6 670	4 420	7.6
	-3.0 m kg	-	-	*18 740	18 730	*13 570	9 320	9 500	6 140	-	-	-	-	8 060	5 300	6.8
	-4.5 m kg	-	-	*15 020	*15 020	*10 950	9 620	-	-	-	-	-	-	*9 100	7 690	5.3
Boom : 6.0m	7.5 m kg	-	-	-	-	-	-	-	-	-	-	-	-	*6 100	*6 100	6.7
Arm : 2.97m	6.0 m kg	-	-	-	-	-	-	*6 270	*6 270	*6 350	5 050	-	-	*5 840	4 860	7.7
Shoe : 600mm	4.5 m kg	-	-	-	-	*8 360	*8 360	*7 170	7 010	*6 630	4 960	-	-	*5 870	4 190	8.4
CWT : 4 950kg	3.0 m kg	-	-	-	-	*11 090	10 210	*8 440	6 680	7 130	4 810	-	-	5 710	3 860	8.7
	1.5 m kg	-	-	-	-	*13 470	9 580	*9 710	6 370	6 950	4 640	-	-	5 560	3 740	8.8
	0 m kg	-	-	-	-	*14 670	9 270	9 520	6 150	6 820	4 520	-	-	5 690	3 800	8.6
	-1.5 m kg	*6 670	*6 670	*10 690	*10 690	*14 820	9 190	9 410	6 060	6 770	4 470	-	-	6 170	4 100	8.1
	-3.0 m kg	*12 370	*12 370	*17 780	*17 780	*14 070	9 260	9 440	6 090	-	-	-	-	7 260	4 790	7.2
	-4.5 m kg	-	-	*16 810	*16 810	*12 060	9 490	-	-	-	-	-	-	*8 960	6 520	5.9
Boom : 6.0m	7.5 m kg	-	-	-	-	-	-	-	-	-	-	-	-	*5 080	*5 080	7.3
Arm : 3.6m	6.0 m kg	-	-	-	-	-	-	-	-	*5 620	5 160	-	-	*4 930	4 420	8.3
Shoe : 600mm	4.5 m kg	-	-	-	-	-	-	*6 390	*6 390	*6 040	5 030	-	-	*4 990	3 870	8.9
CWT : 4 950kg	3.0 m kg	-	-	*15 700	*15 700	*9 800	*9 800	*7 720	6 780	*6 730	4 850	5 400	3 650	*5 210	3 570	9.2
	1.5 m kg	-	-	-	-	*12 460	9 720	*9 110	6 420	6 980	4 660	5 300	3 560	5 140	3 450	9.2
	0 m kg	-	-	*7 100	*7 100	*14 140	9 260	9 520	6 150	6 810	4 500	-	-	5 230	3 490	9.0
	-1.5 m kg	*6 850	*6 850	*10 840	*10 840	*14 740	9 090	9 350	6 000	6 710	4 420	-	-	5 600	3 720	8.6
	-3.0 m kg	*11 080	*11 080	*16 030	*16 030	*14 430	9 090	9 330	5 980	6 720	4 420	-	-	6 420	4 240	7.8
	-4.5 m kg	*16 390	*16 390	*18 660	18 530	*13 040	9 260	9 460	6 100	-	-	-	-	8 340	5 440	6.6
	-6.0 m kg	-	-	-	-	*9 530	*9 530	-	-	-	-	-	-	*9 450	*9 450	4.6
Boom : 5.95m 2-piece	9.0 m kg	-	-	-	-	-	-	-	-	-	-	-	-	*9 660	*9 660	4.3
Arm : 2.5m	7.5 m kg	-	-	-	-	*9 830	*9 830	*8 660	7 160	-	-	-	-	*8 060	6 880	6.2
Shoe : 600mm	6.0 m kg	-	-	-	-	*10 080	*10 080	*9 030	7 120	-	-	-	-	*7 540	5 190	7.3
CWT : 4 950kg	4.5 m kg	-	-	-	-	*12 150	10 740	*9 620	6 870	7 210	4 840	-	-	6 570	4 410	8.0
	3.0 m kg	-	-	-	-	*13 990	9 920	10 000	6 530	7 050	4 700	-	-	6 040	4 030	8.3
	1.5 m kg	-	-	-	-	*14 820	9 340	9 650	6 230	6 890	4 550	-	-	5 880	3 900	8.4
	0 m kg	-	-	-	-	*14 200	9 110	9 450	6 050	6 780	4 450	-	-	6 050	4 000	8.2
	-1.5 m kg	-	-	*10 220	*10 220	*12 540	9 110	9 390	6 000	6 780	4 450	-	-	6 650	4 370	7.7
	-3.0 m kg	-	-	-	-	*9 760	9 250	*7 500	6 090	-	-	-	-	*6 020	5 250	6.8
Boom : 5.95m 2-piece	9.0 m kg	-	-	-	-	*7 920	*7 920	-	-	-	-	-	-	*6 920	*6 920	5.0
Arm : 2.97m	7.5 m kg	-	-	-	-	*7 850	*7 850	*7 530	7 340	-	-	-	-	*6 000	*6 000	6.7
Shoe : 600mm	6.0 m kg	-	-	-	-	*8 030	*8 030	*8 350	7 260	*6 570	5 010	-	-	*5 690	4 780	7.8
CWT : 4 950kg	4.5 m kg	-	-	*16 310	*16 310	*11 470	10 990	*9 250	6 990	7 300	4 920	-	-	*5 670	4 120	8.4
	3.0 m kg	-	-	-	-	*13 450	10 170	*10 110	6 640	7 120	4 760	-	-	5 660	4 120	8.7
	1.5 m kg	-	-	-	-	*14 710	9 490	9 740	6 300	6 930	4 590	-	-	5 510	3 670	8.8
	0 m kg	-	-	-	-	*14 580	9 160	9 490	6 080	6 800	4 470	-	-	5 650	3 740	8.6
	-1.5 m kg	-	-	*10 510	*10 510	*13 280	9 090	9 390	5 990	6 750	4 420	-	-	6 130	4 040	8.1
	-3.0 m kg	-	-	-	-	*10 880	9 180	*8 370	6 040	-	-	-	-	*6 180	4 730	7.3
Boom : 5.95m 2-piece	9.0 m kg	-	-	-	-	-	-	-	-	-	-	-	-	*5 550	*5 550	5.9
Arm : 3.6m	7.5 m kg	-	-	-	-	-	-	*6 510	*6 510	-	-	-	-	*5 000	*5 000	7.3
Shoe : 600mm	6.0 m kg	-	-	-	-	-	-	*6 890	*6 890	*6 340	5 130	-	-	*4 810	4 330	8.3
CWT : 4 950kg	4.5 m kg	-	-	*7 670	*7 670	*8 230	*8 230	*8 150	7 140	7 400	5 010	-	-	*4 830	3 790	8.9
	3.0 m kg	-	-	-	-	*12 530	10 450	*9 610	6 750	7 190	4 810	5 380	3 600	*5 000	3 490	9.2
	1.5 m kg	-	-	-	-	*14 220	9 640	9 820	6 370	6 970	4 610	5 280	3 510	5 080	3 380	9.3
	0 m kg	-	-	*6 910	*6 910	*14 690	9 160	9 500	6 080	6 790	4 450	5 200	3 440	5 170	3 420	9.1
	-1.5 m kg	-	-	*10 670	*10 670	*13 920	8 980	9 330	5 930	6 690	4 360	-	-	5 540	3 650	8.6
	-3.0 m kg	-	-	*15 880	*15 880	*12 030	9 010	*9 170	5 920	6 710	4 380	-	-	*6 250	4 170	7.8

LIFTING CAPACITY EC250DNL

		1.5 m		3.0 m		4.5 m		6.0 m		7.5 m		9.0 m		Max. reach		m	
		Along UC	Across UC	Along UC	Across UC	Along UC	Across UC	Along UC	Across UC	Along UC	Across UC	Along UC	Across UC	Along UC	Across UC		
Boom : 6.0m	7.5 m	kg	-	-	-	-	-	*6 820	6 630	-	-	-	-	*6 880	6 410	6.2	
Arm : 2.5m	6.0 m	kg	-	-	-	-	-	*6 840	6 590	-	-	-	-	*6 880	4 850	7.3	
Shoe : 600mm	4.5 m	kg	-	-	-	-	*9 240	*9 240	*7 690	6 350	*7 050	4 500	-	-	6 590	4 120	8.0
CWT : 4 950kg	3.0 m	kg	-	-	-	-	*11 950	9 080	*8 900	6 040	7 050	4 360	-	-	6 060	3 760	8.3
	1.5 m	kg	-	-	-	-	*14 060	8 540	9 650	5 760	6 890	4 220	-	-	5 900	3 630	8.4
	0 m	kg	-	-	-	-	*14 850	8 340	9 440	5 580	6 780	4 130	-	-	6 060	3 710	8.2
	-1.5 m	kg	-	-	*10 430	*10 430	*14 660	8 320	9 380	5 530	6 770	4 110	-	-	6 650	4 050	7.6
	-3.0 m	kg	-	-	*18 740	16 520	*13 570	8 430	9 460	5 600	-	-	-	-	8 030	4 840	6.8
	-4.5 m	kg	-	-	*15 020	*15 020	*10 950	8 730	-	-	-	-	-	-	*9 100	7 010	5.3
Boom : 6.0m	7.5 m	kg	-	-	-	-	-	-	-	-	-	-	-	*6 100	5 730	6.7	
Arm : 2.97m	6.0 m	kg	-	-	-	-	-	*6 270	*6 270	*6 350	4 660	-	-	*5 840	4 480	7.7	
Shoe : 600mm	4.5 m	kg	-	-	-	-	*8 360	*8 360	*7 170	6 460	*6 630	4 570	-	-	*5 870	3 860	8.4
CWT : 4 950kg	3.0 m	kg	-	-	-	-	*11 090	9 300	*8 440	6 130	7 110	4 420	-	-	5 690	3 550	8.7
	1.5 m	kg	-	-	-	-	*13 470	8 690	*9 710	5 830	6 930	4 260	-	-	5 540	3 430	8.8
	0 m	kg	-	-	-	-	*14 670	8 380	9 480	5 620	6 800	4 140	-	-	5 670	3 480	8.6
	-1.5 m	kg	*6 670	*6 670	*10 690	*10 690	*14 820	8 310	9 380	5 530	6 740	4 090	-	-	6 140	3 750	8.1
	-3.0 m	kg	*12 370	*12 370	*17 780	16 350	*14 070	8 370	9 410	5 550	-	-	-	-	7 240	4 390	7.2
	-4.5 m	kg	-	-	*16 810	16 750	*12 060	8 600	-	-	-	-	-	-	*8 960	5 950	5.9
Boom : 6.0m	7.5 m	kg	-	-	-	-	-	-	-	-	-	-	-	*5 080	5 070	7.3	
Arm : 3.6m	6.0 m	kg	-	-	-	-	-	-	-	*5 620	4 760	-	-	*4 930	4 080	8.3	
Shoe : 600mm	4.5 m	kg	-	-	-	-	-	*6 390	*6 390	*6 040	4 640	-	-	*4 990	3 560	8.9	
CWT : 4 950kg	3.0 m	kg	-	-	*15 700	*15 700	*9 800	9 540	*7 720	6 230	*6 730	4 460	5 380	3 350	*5 210	3 280	9.2
	1.5 m	kg	-	-	-	-	*12 460	8 820	*9 110	5 880	6 960	4 280	5 280	3 260	5 120	3 160	9.2
	0 m	kg	-	-	*7 100	*7 100	*14 140	8 380	9 490	5 610	6 790	4 120	-	-	5 210	3 190	9.0
	-1.5 m	kg	*6 850	*6 850	*10 840	*10 840	*14 740	8 210	9 320	5 470	6 690	4 040	-	-	5 580	3 400	8.6
	-3.0 m	kg	*11 080	*11 080	*16 030	15 980	*14 430	8 210	9 300	5 450	6 690	4 040	-	-	6 400	3 880	7.8
	-4.5 m	kg	*16 390	*16 390	*18 660	16 330	*13 040	8 380	9 430	5 560	-	-	-	-	8 320	4 970	6.6
	-6.0 m	kg	-	-	-	-	*9 530	8 780	-	-	-	-	-	-	*9 450	8 690	4.6
Boom : 5.95m 2-piece	9.0 m	kg	-	-	-	-	-	-	-	-	-	-	-	*9 660	*9 660	4.3	
Arm : 2.5m	7.5 m	kg	-	-	-	-	*9 830	*9 830	*8 660	6 590	-	-	-	*8 060	6 330	6.2	
Shoe : 600mm	6.0 m	kg	-	-	-	-	*10 080	*10 080	*9 030	6 560	-	-	-	*7 540	4 770	7.3	
CWT : 4 950kg	4.5 m	kg	-	-	-	-	*12 150	9 790	*9 620	6 310	7 190	4 450	-	-	6 550	4 050	8.0
	3.0 m	kg	-	-	-	-	*13 990	9 010	9 970	5 980	7 030	4 310	-	-	6 020	3 690	8.3
	1.5 m	kg	-	-	-	-	*14 820	8 440	9 620	5 680	6 870	4 160	-	-	5 860	3 570	8.4
	0 m	kg	-	-	-	-	*14 200	8 220	9 420	5 500	6 760	4 070	-	-	6 030	3 650	8.2
	-1.5 m	kg	-	-	*10 220	*10 220	*12 540	8 220	9 360	5 450	6 760	4 060	-	-	6 620	3 990	7.7
	-3.0 m	kg	-	-	-	-	*9 760	8 360	*7 500	5 550	-	-	-	-	*6 020	4 800	6.8
Boom : 5.95m 2-piece	9.0 m	kg	-	-	-	-	*7 920	*7 920	-	-	-	-	-	*6 920	*6 920	5.0	
Arm : 2.97m	7.5 m	kg	-	-	-	-	*7 850	*7 850	*7 530	6 770	-	-	-	*6 000	5 640	6.7	
Shoe : 600mm	6.0 m	kg	-	-	-	-	*8 030	*8 030	*8 350	6 690	*6 570	4 610	-	-	*5 690	4 400	7.8
CWT : 4 950kg	4.5 m	kg	-	-	*16 310	*16 310	*11 470	10 040	*9 250	6 430	7 280	4 530	-	-	*5 670	3 780	8.4
	3.0 m	kg	-	-	-	-	*13 450	9 240	10 090	6 080	7 100	4 370	-	-	5 640	3 470	8.7
	1.5 m	kg	-	-	-	-	*14 710	8 590	9 710	5 750	6 910	4 200	-	-	5 500	3 360	8.8
	0 m	kg	-	-	-	-	*14 580	8 270	9 460	5 540	6 780	4 080	-	-	5 630	3 420	8.6
	-1.5 m	kg	-	-	*10 510	*10 510	*13 280	8 200	9 360	5 450	6 730	4 040	-	-	6 110	3 690	8.1
	-3.0 m	kg	-	-	-	-	*10 880	8 290	*8 370	5 490	-	-	-	-	*6 180	4 320	7.3
Boom : 5.95m 2-piece	9.0 m	kg	-	-	-	-	-	-	-	-	-	-	-	*5 550	*5 550	5.9	
Arm : 3.6m	7.5 m	kg	-	-	-	-	-	*6 510	*6 510	-	-	-	-	*5 000	4 960	7.3	
Shoe : 600mm	6.0 m	kg	-	-	-	-	-	*6 890	6 850	*6 340	4 730	-	-	*4 810	3 990	8.3	
CWT : 4 950kg	4.5 m	kg	-	-	*7 670	*7 670	*8 230	*8 230	*8 150	6 570	7 380	4 610	-	-	*4 830	3 480	8.9
	3.0 m	kg	-	-	-	-	*12 530	9 510	*9 610	6 190	7 170	4 420	5 360	3 300	*5 000	3 200	9.2
	1.5 m	kg	-	-	-	-	*14 220	8 730	9 790	5 810	6 940	4 220	5 260	3 210	5 070	3 090	9.3
	0 m	kg	-	-	*6 910	*6 910	*14 690	8 270	9 460	5 530	6 770	4 060	5 190	3 140	5 160	3 120	9.1
	-1.5 m	kg	-	-	*10 670	*10 670	*13 920	8 090	9 300	5 390	6 670	3 980	-	-	5 520	3 330	8.6
	-3.0 m	kg	-	-	*15 880	15 820	*12 030	8 120	*9 170	5 380	6 690	3 990	-	-	*6 250	3 800	7.8

SPECIFICATIONS.

LIFTING CAPACITY EC250DLR

		6.0 m		7.5 m		9.0 m		10.5 m	
		Along UC	Across UC	Along UC	Across UC	Along UC	Across UC	Along UC	Across UC
Boom : 10.2m	13.5 m kg	-	-	-	-	-	-	-	-
Arm : 7.85m	12.0 m kg	-	-	-	-	-	-	-	-
Shoe : 800mm	10.5 m kg	-	-	-	-	-	-	-	-
CWT : 6 200kg	9.0 m kg	-	-	-	-	-	-	-	-
	7.5 m kg	-	-	-	-	-	-	-	-
	6.0 m kg	-	-	-	-	-	-	-	-
	4.5 m kg	-	-	-	-	-	-	*2 940	*2 940
	3.0 m kg	*5 420	*5 420	*4 360	*4 360	*3 710	*3 710	*3 280	3 130
	1.5 m kg	*6 630	6 390	*5 110	4 730	*4 210	3 650	*3 630	2 890
	0 m kg	*7 600	5 710	*5 770	4 280	*4 670	3 350	*3 960	2 680
	-1.5 m kg	*8 250	5 270	*6 280	3 950	4 980	3 100	4 010	2 500
	-3.0 m kg	8 540	5 030	6 180	3 740	4 790	2 930	3 870	2 370
	-4.5 m kg	8 430	4 930	6 050	3 620	4 680	2 820	3 770	2 280
	-6.0 m kg	8 420	4 920	6 000	3 580	4 620	2 780	3 730	2 240
	-7.5 m kg	*8 390	4 990	6 030	3 610	4 630	2 780	3 730	2 240
-9.0 m kg	*7 900	5 130	6 130	3 690	4 700	2 840	3 790	2 290	
-10.5 m kg	*7 140	5 340	*5 790	3 840	*4 780	2 960	3 900	2 400	
-12.0 m kg	*6 000	5 640	*4 870	4 070	*3 960	3 170	-	-	

		12.0 m		13.5 m		15.0 m		Max. reach		Max.
		Along UC	Across UC	Along UC	Across UC	Along UC	Across UC	Along UC	Across UC	m
Boom : 10.2m	13.5 m kg	-	-	-	-	-	-	*1 080	*1 080	12.4
Arm : 7.85m	12.0 m kg	-	-	*1 180	*1 180	-	-	*1 020	*1 020	13.7
Shoe : 800mm	10.5 m kg	-	-	*1 760	*1 760	-	-	*980	*980	14.7
CWT : 6 200kg	9.0 m kg	-	-	*2 110	*2 110	*1 380	*1 380	*970	*970	15.5
	7.5 m kg	*2 340	*2 340	*2 310	*2 310	*1 810	*1 810	*960	*960	16.1
	6.0 m kg	*2 520	*2 520	*2 430	2 240	*2 140	1 780	*980	*980	16.6
	4.5 m kg	*2 730	2 660	*2 580	2 130	*2 440	1 710	*1 000	*1 000	16.9
	3.0 m kg	*2 980	2 500	*2 760	2 010	2 590	1 630	*1 040	*1 040	17.0
	1.5 m kg	*3 230	2 330	*2 940	1 900	2 500	1 550	*1 100	*1 100	17.1
	0 m kg	3 450	2 180	2 870	1 790	2 420	1 480	*1 170	1 150	17.0
	-1.5 m kg	3 310	2 050	2 770	1 690	2 350	1 410	*1 270	1 150	16.7
	-3.0 m kg	3 200	1 950	2 700	1 620	2 300	1 360	*1 410	1 180	16.3
	-4.5 m kg	3 130	1 880	2 650	1 570	2 270	1 330	*1 590	1 230	15.8
	-6.0 m kg	3 100	1 850	2 630	1 560	*2 040	1 340	*1 840	1 330	15.1
	-7.5 m kg	3 100	1 860	2 650	1 580	-	-	*2 210	1 480	14.2
-9.0 m kg	3 160	1 910	-	-	-	-	*2 820	1 710	13.1	
-10.5 m kg	-	-	-	-	-	-	*3 400	2 110	11.6	
-12.0 m kg	-	-	-	-	-	-	*3 520	2 850	9.8	

LIFTING CAPACITY EC300DL

		1.5 m		3.0 m		4.5 m		6.0 m		7.5 m		9.0 m		Max. reach		m	
		Along UC	Across UC	Along UC	Across UC	Along UC	Across UC	Along UC	Across UC	Along UC	Across UC	Along UC	Across UC	Along UC	Across UC		
Boom : 6.2m	7.5 m	kg	-	-	-	-	-	-	*7 600	*7 600	-	-	-	-	*7 740	7 180	6.6
Arm : 2.55m	6.0 m	kg	-	-	-	-	-	-	*7 920	*7 920	*7 700	5 610	-	-	*7 710	5 530	7.6
Shoe : 600mm	4.5 m	kg	-	-	-	-	*11 200	*11 200	*8 990	7 800	*8 000	5 480	-	-	7 410	4 720	8.2
CWT : 5 500kg	3.0 m	kg	-	-	-	-	*14 260	11 090	*10 370	7 330	8 350	5 260	-	-	6 840	4 320	8.5
	1.5 m	kg	-	-	-	-	*16 330	10 380	11 440	6 930	8 120	5 050	-	-	6 670	4 180	8.6
	0 m	kg	-	-	-	-	*16 890	10 140	11 170	6 700	7 960	4 920	-	-	6 860	4 270	8.4
	-1.5 m	kg	-	-	*12 830	*12 830	*16 440	10 140	11 090	6 640	7 940	4 890	-	-	7 540	4 670	7.8
	-3.0 m	kg	-	-	*20 420	*20 420	*15 070	10 310	11 210	6 740	-	-	-	-	9 130	5 610	6.9
	-4.5 m	kg	-	-	*16 190	*16 190	*12 070	10 720	-	-	-	-	-	-	*9 720	8 130	5.5
	-6.0 m	kg	-	-	-	-	-	-	-	-	-	-	-	-	-	-	-
Boom : 6.2m	7.5 m	kg	-	-	-	-	-	-	-	-	-	-	-	*6 300	6 090	7.3	
Arm : 3.05m	6.0 m	kg	-	-	-	-	-	-	-	-	*6 980	5 660	-	-	*6 030	4 850	8.2
Shoe : 600mm	4.5 m	kg	-	-	-	-	-	-	*8 280	7 870	*7 440	5 490	-	-	*6 010	4 200	8.8
CWT : 5 500kg	3.0 m	kg	-	-	-	-	*13 090	11 300	*9 720	7 370	*8 160	5 240	6 200	3 890	6 170	3 870	9.1
	1.5 m	kg	-	-	-	-	*15 540	10 430	*11 070	6 920	8 070	5 000	6 090	3 790	6 020	3 740	9.1
	0 m	kg	-	-	-	-	*16 600	10 030	11 090	6 620	7 880	4 830	-	-	6 170	3 810	8.9
	-1.5 m	kg	*7 500	*7 500	*11 670	*11 670	*16 550	9 950	10 960	6 500	7 800	4 750	-	-	6 680	4 110	8.4
	-3.0 m	kg	*13 800	*13 800	*19 390	*19 390	*15 550	10 060	11 010	6 540	7 890	4 840	-	-	7 840	4 810	7.6
	-4.5 m	kg	-	-	*18 200	*18 200	*13 220	10 390	*9 630	6 810	-	-	-	-	*9 020	6 470	6.3
	-6.0 m	kg	-	-	-	-	-	-	-	-	-	-	-	-	-	-	-
Boom : 6.2m	7.5 m	kg	-	-	-	-	-	-	-	-	*6 170	5 870	-	-	*4 950	*4 950	8.0
Arm : 3.7m	6.0 m	kg	-	-	-	-	-	-	-	-	*6 250	5 810	-	-	*4 760	4 300	8.9
Shoe : 600mm	4.5 m	kg	-	-	-	-	-	-	*7 420	*7 420	*6 810	5 610	*6 410	4 080	*4 750	3 780	9.4
CWT : 5 500kg	3.0 m	kg	-	-	-	-	*11 690	*11 690	*8 950	7 550	*7 620	5 340	6 280	3 950	*4 880	3 500	9.7
	1.5 m	kg	-	-	-	-	*14 520	10 710	*10 460	7 040	8 150	5 060	6 120	3 810	*5 190	3 380	9.7
	0 m	kg	-	-	*6 750	*6 750	*16 180	10 140	11 170	6 680	7 900	4 850	6 000	3 700	5 560	3 430	9.5
	-1.5 m	kg	*6 940	*6 940	*10 970	*10 970	*16 650	9 920	10 940	6 480	7 760	4 720	5 950	3 660	5 940	3 650	9.1
	-3.0 m	kg	*11 600	*11 600	*16 610	*16 610	*16 130	9 940	10 910	6 460	7 760	4 720	-	-	6 780	4 160	8.3
	-4.5 m	kg	*17 380	*17 380	*20 560	*20 560	*14 460	10 160	*10 740	6 600	-	-	-	-	*8 480	5 260	7.2
	-6.0 m	kg	-	-	*15 040	*15 040	*10 660	*10 660	-	-	-	-	-	-	*8 610	8 410	5.3
Boom : 6.2m 2-piece	9.0 m	kg	-	-	-	-	*11 630	*11 630	-	-	-	-	-	-	*10 600	*10 600	5.0
Arm : 2.55m	7.5 m	kg	-	-	-	-	*11 220	*11 220	*9 910	8 330	-	-	-	-	*9 280	6 970	6.7
Shoe : 600mm	6.0 m	kg	-	-	*12 100	*12 100	*12 180	*12 180	*10 160	8 160	8 740	5 560	-	-	8 460	5 380	7.7
CWT : 5 500kg	4.5 m	kg	-	-	-	-	*14 110	12 140	*10 930	7 750	8 590	5 420	-	-	7 300	4 590	8.3
	3.0 m	kg	-	-	-	-	*16 140	10 970	*11 800	7 250	8 330	5 190	-	-	6 740	4 200	8.6
	1.5 m	kg	-	-	-	-	-	-	11 410	6 830	8 100	4 980	-	-	6 570	4 060	8.7
	0 m	kg	-	-	-	-	*15 850	9 990	11 140	6 600	7 940	4 840	-	-	6 770	4 160	8.4
	-1.5 m	kg	-	-	-	-	*13 950	10 020	*10 950	6 540	7 930	4 830	-	-	7 440	4 550	7.9
	-3.0 m	kg	-	-	-	-	*10 920	10 230	*8 620	6 670	-	-	-	-	*6 660	5 480	7.0
	-4.5 m	kg	-	-	-	-	-	-	-	-	-	-	-	-	-	-	-
Boom : 6.2m 2-piece	9.0 m	kg	-	-	-	-	*9 590	*9 590	-	-	-	-	-	-	*7 210	*7 210	5.9
Arm : 3.05m	7.5 m	kg	-	-	-	-	*9 010	*9 010	*9 200	8 470	-	-	-	-	*6 370	5 910	7.3
Shoe : 600mm	6.0 m	kg	-	-	-	-	*9 570	*9 570	*9 550	8 270	*8 510	5 620	-	-	*6 050	4 710	8.3
CWT : 5 500kg	4.5 m	kg	-	-	-	-	*13 180	12 430	*10 380	7 830	8 620	5 440	-	-	*6 000	4 080	8.9
	3.0 m	kg	-	-	-	-	*15 380	11 200	*11 360	7 300	8 330	5 180	6 190	3 830	6 070	3 750	9.1
	1.5 m	kg	-	-	-	-	*16 560	10 280	11 410	6 820	8 050	4 930	6 070	3 720	5 930	3 630	9.2
	0 m	kg	-	-	-	-	*16 220	9 880	11 060	6 520	7 860	4 750	-	-	6 080	3 710	9.0
	-1.5 m	kg	-	-	*10 830	*10 830	*14 700	9 810	10 930	6 400	7 780	4 680	-	-	6 600	4 010	8.5
	-3.0 m	kg	-	-	-	-	*12 080	9 960	*9 420	6 470	*6 640	4 790	-	-	*6 340	4 700	7.7
	-4.5 m	kg	-	-	-	-	-	-	-	-	-	-	-	-	-	-	-
Boom : 6.2m 2-piece	9.0 m	kg	-	-	-	-	-	*7 240	*7 240	-	-	-	-	-	*5 550	*5 550	6.8
Arm : 3.7m	7.5 m	kg	-	-	-	-	-	*7 460	*7 460	*6 680	5 850	-	-	-	*5 010	*5 010	8.1
Shoe : 600mm	6.0 m	kg	-	-	-	-	*7 030	*7 030	*7 800	*7 800	*7 700	5 790	-	-	*4 780	4 170	9.0
CWT : 5 500kg	4.5 m	kg	-	-	*9 960	*9 960	*9 810	*9 810	*9 540	8 060	*8 370	5 570	6 410	4 030	*4 740	3 670	9.5
	3.0 m	kg	-	-	-	-	*14 410	11 670	*10 830	7 500	8 450	5 280	6 270	3 900	*4 840	3 390	9.8
	1.5 m	kg	-	-	-	-	*16 160	10 590	11 580	6 960	8 130	4 990	6 110	3 750	*5 100	3 280	9.8
	0 m	kg	-	-	*5 970	*5 970	*16 510	9 980	11 140	6 580	7 880	4 770	5 980	3 640	5 480	3 330	9.6
	-1.5 m	kg	-	-	*10 230	*10 230	*15 570	9 770	10 910	6 380	7 740	4 640	5 940	3 600	5 860	3 550	9.1
	-3.0 m	kg	-	-	*15 950	*15 950	*13 480	9 820	*10 330	6 370	7 750	4 650	-	-	*6 190	4 060	8.4
	-4.5 m	kg	-	-	-	-	*9 990	*9 990	*7 590	6 550	-	-	-	-	*6 210	5 480	7.3

SPECIFICATIONS.

LIFTING CAPACITY EC300DNL

		1.5 m		3.0 m		4.5 m		6.0 m		7.5 m		9.0 m		Max. reach		m	
		Along UC	Across UC	Along UC	Across UC	Along UC	Across UC	Along UC	Across UC	Along UC	Across UC	Along UC	Across UC	Along UC	Across UC		
Boom : 6.2m	7.5 m	kg	-	-	-	-	-	-	*7 600	*7 600	-	-	-	-	*7 740	7 130	6.6
Arm : 2.55m	6.0 m	kg	-	-	-	-	-	-	*7 920	*7 920	*7 700	5 570	-	-	*7 710	5 490	7.6
Shoe : 600mm	4.5 m	kg	-	-	-	-	*11 200	*11 200	*8 990	7 740	*8 000	5 440	-	-	7 350	4 690	8.2
CWT : 5 500kg	3.0 m	kg	-	-	-	-	*14 260	11 010	*10 370	7 280	8 280	5 220	-	-	6 780	4 280	8.5
	1.5 m	kg	-	-	-	-	*16 330	10 300	11 340	6 880	8 050	5 010	-	-	6 610	4 140	8.6
	0 m	kg	-	-	-	-	*16 890	10 060	11 080	6 650	7 900	4 880	-	-	6 810	4 230	8.4
	-1.5 m	kg	-	-	*12 830	*12 830	*16 440	10 060	11 000	6 580	7 870	4 850	-	-	7 480	4 630	7.8
	-3.0 m	kg	-	-	*20 420	*20 420	*15 070	10 230	11 110	6 680	-	-	-	-	9 050	5 560	6.9
	-4.5 m	kg	-	-	*16 190	*16 190	*12 070	10 640	-	-	-	-	-	-	*9 720	8 060	5.5
	-6.0 m	kg	-	-	-	-	-	-	-	-	-	-	-	-	-	-	-
Boom : 6.2m	7.5 m	kg	-	-	-	-	-	-	-	-	-	-	-	*6 300	6 040	7.2	
Arm : 3.05m	6.0 m	kg	-	-	-	-	-	-	-	-	*6 980	5 620	-	-	*6 030	4 810	8.2
Shoe : 600mm	4.5 m	kg	-	-	-	-	-	-	*8 280	7 810	*7 440	5 450	-	-	*6 010	4 170	8.7
CWT : 5 500kg	3.0 m	kg	-	-	-	-	*13 090	11 220	*9 720	7 310	*8 160	5 200	6 150	3 860	6 110	3 830	9.0
	1.5 m	kg	-	-	-	-	*15 540	10 340	*11 070	6 860	8 010	4 960	6 040	3 750	5 970	3 710	9.1
	0 m	kg	-	-	-	-	*16 600	9 950	11 000	6 570	7 810	4 790	-	-	6 110	3 770	8.9
	-1.5 m	kg	*7 500	*7 500	*11 670	*11 670	*16 550	9 870	10 860	6 450	7 730	4 710	-	-	6 620	4 080	8.4
	-3.0 m	kg	*13 800	*13 800	*19 390	*19 390	*15 550	9 980	10 910	6 490	7 820	4 790	-	-	7 780	4 770	7.5
	-4.5 m	kg	-	-	*18 200	*18 200	*13 220	10 310	*9 630	6 760	-	-	-	-	*9 020	6 410	6.2
	-6.0 m	kg	-	-	-	-	-	-	-	-	-	-	-	-	-	-	-
Boom : 6.2m	7.5 m	kg	-	-	-	-	-	-	-	-	*6 170	5 830	-	-	*4 950	*4 950	8.0
Arm : 3.7m	6.0 m	kg	-	-	-	-	-	-	-	-	*6 250	5 770	-	-	*4 760	4 260	8.9
Shoe : 600mm	4.5 m	kg	-	-	-	-	-	-	*7 420	*7 420	*6 810	5 570	6 360	4 050	*4 750	3 750	9.4
CWT : 5 500kg	3.0 m	kg	-	-	-	-	*11 690	11 650	*8 950	7 490	*7 620	5 300	6 220	3 920	*4 880	3 470	9.7
	1.5 m	kg	-	-	-	-	*14 520	10 630	*10 460	6 990	8 080	5 020	6 070	3 780	*5 190	3 350	9.7
	0 m	kg	-	-	*6 750	*6 750	*16 180	10 050	11 070	6 620	7 840	4 800	5 950	3 670	5 510	3 390	9.5
	-1.5 m	kg	*6 940	*6 940	*10 970	*10 970	*16 650	9 840	10 850	6 430	7 700	4 680	5 900	3 620	5 890	3 620	9.1
	-3.0 m	kg	*11 600	*11 600	*16 610	*16 610	*16 130	9 860	10 820	6 400	7 690	4 680	-	-	6 790	4 120	8.3
	-4.5 m	kg	*17 380	*17 380	*20 560	20 520	*14 460	10 080	*10 740	6 550	-	-	-	-	*8 480	5 220	7.2
	-6.0 m	kg	-	-	*15 040	*15 040	*10 660	10 600	-	-	-	-	-	-	*8 610	8 350	5.4
Boom : 6.2m 2-piece	9.0 m	kg	-	-	-	-	*11 630	*11 630	-	-	-	-	-	-	*10 600	*10 600	5.0
Arm : 2.55m	7.5 m	kg	-	-	-	-	*11 220	*11 220	*9 910	8 270	-	-	-	-	*9 280	6 920	6.7
Shoe : 600mm	6.0 m	kg	-	-	*12 100	*12 100	*12 180	*12 180	*10 160	8 100	8 670	5 520	-	-	8 400	5 330	7.7
CWT : 5 500kg	4.5 m	kg	-	-	-	-	*14 110	12 060	*10 930	7 690	8 520	5 380	-	-	7 240	4 560	8.3
	3.0 m	kg	-	-	-	-	*16 140	10 890	11 800	7 200	8 270	5 150	-	-	6 680	4 160	8.6
	1.5 m	kg	-	-	-	-	-	-	11 320	6 780	8 030	4 940	-	-	6 510	4 030	8.7
	0 m	kg	-	-	-	-	*15 850	9 910	11 040	6 540	7 870	4 800	-	-	6 710	4 120	8.4
	-1.5 m	kg	-	-	-	-	*13 950	9 940	*10 950	6 490	7 860	4 780	-	-	7 380	4 520	7.9
	-3.0 m	kg	-	-	-	-	*10 920	10 150	*8 620	6 620	-	-	-	-	*6 660	5 440	7.0
	-4.5 m	kg	-	-	-	-	-	-	-	-	-	-	-	-	-	-	-
Boom : 6.2m 2-piece	9.0 m	kg	-	-	-	-	*9 590	*9 590	-	-	-	-	-	-	*7 210	*7 210	5.8
Arm : 3.05m	7.5 m	kg	-	-	-	-	*9 010	*9 010	*9 200	8 420	-	-	-	-	*6 370	5 870	7.3
Shoe : 600mm	6.0 m	kg	-	-	-	-	*9 570	*9 570	*9 550	8 210	*8 510	5 580	-	-	*6 050	4 670	8.2
CWT : 5 500kg	4.5 m	kg	-	-	-	-	*13 180	12 340	*10 380	7 780	8 560	5 400	-	-	*6 000	4 050	8.8
	3.0 m	kg	-	-	-	-	*15 380	11 120	*11 360	7 240	8 270	5 140	6 140	3 800	6 020	3 720	9.1
	1.5 m	kg	-	-	-	-	*16 560	10 200	11 320	6 770	7 990	4 890	6 020	3 690	5 880	3 600	9.1
	0 m	kg	-	-	-	-	*16 220	9 800	10 970	6 460	7 790	4 710	-	-	6 030	3 670	8.9
	-1.5 m	kg	-	-	*10 830	*10 830	*14 700	9 730	10 840	6 350	7 720	4 640	-	-	6 540	3 980	8.4
	-3.0 m	kg	-	-	-	-	*12 080	9 880	*9 420	6 410	*6 640	4 750	-	-	*6 340	4 660	7.6
	-4.5 m	kg	-	-	-	-	-	-	-	-	-	-	-	-	-	-	-
Boom : 6.2m 2-piece	9.0 m	kg	-	-	-	-	-	*7 240	*7 240	-	-	-	-	*5 550	*5 550	6.8	
Arm : 3.7m	7.5 m	kg	-	-	-	-	-	*7 460	*7 460	*6 680	5 810	-	-	*5 010	*5 010	8.1	
Shoe : 600mm	6.0 m	kg	-	-	-	-	*7 030	*7 030	*7 800	*7 800	*7 700	5 750	-	-	*4 780	4 140	9.0
CWT : 5 500kg	4.5 m	kg	-	-	*9 960	*9 960	*9 810	*9 810	*9 540	8 000	*8 370	5 530	6 360	4 000	*4 740	3 630	9.5
	3.0 m	kg	-	-	-	-	*14 410	11 590	*10 830	7 440	8 390	5 240	6 210	3 870	*4 840	3 360	9.8
	1.5 m	kg	-	-	-	-	*16 160	10 500	11 490	6 900	8 060	4 950	6 050	3 720	*5 100	3 250	9.8
	0 m	kg	-	-	*5 970	*5 970	*16 510	9 900	11 040	6 520	7 810	4 730	5 930	3 600	5 430	3 300	9.6
	-1.5 m	kg	-	-	*10 230	*10 230	*15 570	9 690	10 820	6 330	7 680	4 600	5 890	3 570	5 810	3 520	9.1
	-3.0 m	kg	-	-	*15 950	*15 950	*13 480	9 740	*10 330	6 310	7 690	4 610	-	-	*6 190	4 020	8.4
	-4.5 m	kg	-	-	-	-	*9 990	*9 990	*7 590	6 490	-	-	-	-	*6 210	5 415	7.3

LIFTING CAPACITY EC300DLR

		6.0 m		7.5 m		9.0 m		10.5 m	
		Along UC	Across UC	Along UC	Across UC	Along UC	Across UC	Along UC	Across UC
Boom : 10.2m	13.5 m kg	-	-	-	-	-	-	-	-
Arm : 7.9m	12.0 m kg	-	-	-	-	-	-	-	-
Shoe : 800mm	10.5 m kg	-	-	-	-	-	-	-	-
CWT : 6 800kg	9.0 m kg	-	-	-	-	-	-	-	-
	7.5 m kg	-	-	-	-	-	-	-	-
	6.0 m kg	-	-	-	-	-	-	-	-
	4.5 m kg	-	-	-	-	-	-	*3 640	*3 640
	3.0 m kg	-	-	*5 390	*5 390	*4 590	*4 590	*4 050	3 670
	1.5 m kg	*8 160	7 470	*6 290	5 540	*5 190	4 280	*4 470	3 410
	0 m kg	*9 280	6 710	*7 060	5 030	*5 730	3 940	*4 860	3 160
	-1.5 m kg	*10 020	6 220	*7 650	4 660	6 130	3 670	4 940	2 960
	-3.0 m kg	*9 880	5 950	7 650	4 420	5 920	3 470	4 780	2 810
	-4.5 m kg	*10 430	5 840	7 500	4 290	5 790	3 350	4 670	2 710
	-6.0 m kg	*10 400	5 830	7 450	4 240	5 730	3 300	4 620	2 660
	-7.5 m kg	*10 030	5 900	7 480	4 270	5 740	3 300	4 620	2 660
-9.0 m kg	*9 400	6 060	*7 570	4 370	5 810	3 370	4 680	2 720	
-10.5 m kg	*8 440	6 290	*6 850	4 540	*5 670	3 510	*4 710	2 850	
-12.0 m kg	*7 000	6 630	*5 700	4 800	*4 630	3 740	-	-	

		12.0 m		13.5 m		15.0 m		Max. reach		
		Along UC	Across UC	Along UC	Across UC	Along UC	Across UC	Along UC	Across UC	m
Boom : 10.2m	13.5 m kg	-	-	-	-	-	-	*1 310	*1 310	13.0
Arm : 7.9m	12.0 m kg	-	-	*1 850	*1 850	-	-	*1 230	*1 230	14.2
Shoe : 800mm	10.5 m kg	-	-	*2 430	*2 430	*1 300	*1 300	*1 180	*1 180	15.1
CWT : 6 800kg	9.0 m kg	-	-	*2 750	*2 750	*2 030	*2 030	*1 160	*1 160	15.9
	7.5 m kg	-	-	*2 850	2 740	*2 490	2 180	*1 160	*1 160	16.5
	6.0 m kg	*3 120	*3 120	*3 000	2 640	*2 870	2 120	*1 160	*1 160	16.9
	4.5 m kg	*3 380	3 130	*3 190	2 520	*3 050	2 030	*1 190	*1 190	17.2
	3.0 m kg	*3 680	2 940	*3 400	2 380	3 190	1 940	*1 230	*1 230	17.4
	1.5 m kg	*3 980	2 750	*3 620	2 250	3 090	1 850	*1 280	*1 280	17.4
	0 m kg	4 240	2 580	3 540	2 120	3 000	1 760	*1 360	1 340	17.3
	-1.5 m kg	4 080	2 430	3 430	2 020	2 920	1 680	*1 460	1 350	17.0
	-3.0 m kg	3 960	2 320	3 340	1 930	2 860	1 630	*1 600	1 380	16.6
	-4.5 m kg	3 880	2 240	3 280	1 880	2 830	1 600	*1 780	1 450	16.1
	-6.0 m kg	3 840	2 200	3 260	1 860	2 830	1 600	*2 040	1 560	15.4
	-7.5 m kg	3 850	2 210	3 290	1 880	-	-	*2 400	1 730	14.5
-9.0 m kg	3 910	2 270	-	-	-	-	*2 980	2 000	13.4	
-10.5 m kg	-	-	-	-	-	-	*3 860	2 440	12.0	
-12.0 m kg	-	-	-	-	-	-	*3 900	3 250	10.1	

EQUIPMENT.

STANDARD EQUIPMENT

	EC250D	EC300D
Engine		
Turbocharged, 4 stroke diesel engine with water cooling, direct injection and charged air cooler that meets Tier 4i EU (Stage IIIB) requirements	•	•
Air filter with indicator	•	•
Air intake heater	•	•
Cyclone precleaner	•	•
Electric engine shutoff	•	•
Fuel filter and water separator	•	•
Fuel filler pump: 50 l/min, with automatic shutoff	•	•
Alternator, 110 A	•	•
Electric/Electronic control system		
Contronics	•	•
Advanced mode control system	•	•
Selfdiagnostic system	•	•
Machine status indication	•	•
Engine speed sensing power control	•	•
Automatic idling system	•	•
Onetouch power boost	•	•
Safety stop/start function	•	•
Adjustable LCD color monitor	•	•
Master electrical disconnect switch	•	•
Engine restart prevention circuit	•	•
Highcapacity halogen lights:	•	•
Frame-mounted 2	•	•
Boom-mounted 1	•	•
Batteries, 2 x 12 V / 200 Ah	•	•
Start motor, 24 V / 5.5 kW	•	•
Hydraulic system		
Hose rupture valve: boom	•	•
Overload warning device	•	•
Automatic sensing hydraulic system	•	•
Summation system	•	•
Boom priority	•	•
Arm priority	•	•
Swing priority	•	•
"ECO" mode fuel saving technology	•	•
Boom, arm and bucket regeneration valves	•	•
Swing antirebound valves	•	•
Boom and arm holding valves	•	•
Multistage filtering system	•	•
Cylinder cushioning	•	•
Cylinder contamination seals	•	•
Auxiliary hydraulic valve	•	•
Automatic twospeed travel motors	•	•
Hydraulic oil, ISO VG 46	•	•
Frame		
Access way with handrail	•	•
Tool storage area	•	•
Punched metal antislip plates	•	•
Undercover (heavyduty)	•	•
Full height counterweight:		
4950 kg	•	•
6200 kg Long Reach	•	•
5500 kg		•
6800 kg Long Reach		•
Cab and interior		
ROPS (ISO121172) certified cab	•	•
Silicon oil and rubber mounts with spring	•	•
Travel pedals and hand levers	•	•

	EC250D	EC300D
Adjustable operator seat and joystick control console	•	•
Control joysticks with 4 switches each	•	•
Heater & airconditioner, automatic	•	•
Flexible antenna	•	•
AM/FM stereo with CD player and MP3 input	•	•
Hydraulic safety lock lever	•	•
Cab, allweather sound suppressed, includes:	•	•
Cup holders	•	•
Door locks	•	•
Tinted glass	•	•
Floor mat	•	•
Horn	•	•
Large storage area	•	•
Pullup type front window	•	•
Removable lower windshield	•	•
Seat belt	•	•
Safety glass	•	•
Sun screens, front, roof, rear	•	•
Rain shield	•	•
Windshield wiper with intermittent feature	•	•
Rear view camera	•	•
Master key	•	•
Undercarriage		
Undercover (heavyduty)	•	•
Hydraulic track adjusters	•	•
Greased and sealed track link	•	•
Track Guard	•	•
Track shoes		
600 mm with triple grousers	•	•
800 mm with triple grousers Long Reach	•	•
Digging equipment		
Boom: 6.0 m monoblock	•	
Arm: 2.97 m	•	
Boom: 10.2 m monoblock, Long Reach	•	
Arm: 7.85 m, Long Reach	•	
Boom: 6.2 m monoblock		•
Arm: 3.05 m		•
Boom: 10.2 m monoblock, Long Reach		•
Arm: 7.9 m, Long Reach		•
Manual centralized lubrication	•	•

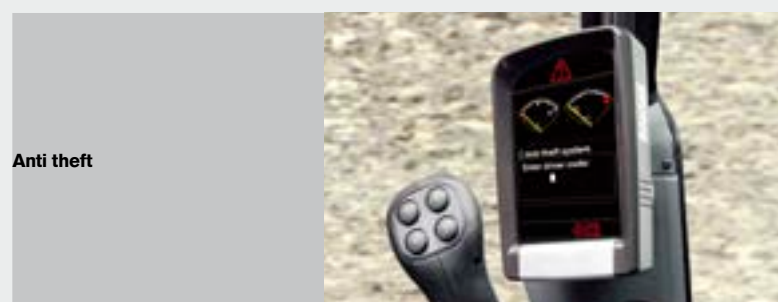
OPTIONAL EQUIPMENT

	EC250D	EC300D
Engine		
Block heater: 120 V, 240 V	•	•
Oil bath pre-cleaner	•	•
Diesel coolant heater, 10 kW	•	•
Water separator with heater	•	•
Auto engine shutdown	•	•
Electric		
Extra work lights:	•	•
Cab-mounted 3	•	•
Boom-mounted 1	•	•
Counterweight-mounted 1	•	•
Travel alarm	•	•
Anti-theft system	•	•
Rotating warning beacon	•	•

OPTIONAL EQUIPMENT

	EC250D	EC300D
Hydraulic system		
Hose rupture valve: arm	•	•
Boom float function with HRV	•	•
Boom float function without HRV	•	•
Hydraulic piping:	•	•
Attachment management system (up to 18 programmable memories)	•	•
Hammer & shear, 1 and 2 pump flow	•	•
Hammer & shear:		
variable flow and pressure pre-setting	•	•
Additional return filter	•	•
Slope & rotator	•	•
Grapple	•	•
Oil leak (drain) line	•	•
Quick coupler piping	•	•
Volvo hydraulic quick coupler S1	•	
Volvo hydraulic quick coupler S2	•	•
Volvo hydraulic quick coupler U24	•	
Volvo hydraulic quick coupler U29		•
Hydraulic oil, biodegradable 46	•	•
Hydraulic oil, longlife oil 32	•	•
Hydraulic oil, longlife oil 46	•	•
Hydraulic oil, longlife oil 68	•	•
Cab and interior		
Fabric seat with heater	•	•
Fabric seat with heater and air suspension	•	•
Opening top hatch	•	•
Falling object guard (FOG)	•	•
Frame-mounted	•	•
Cab-mounted	•	•
Cab-mounted falling object protective structure (FOPS)	•	•
Smoker kit (ashtray and lighter)	•	•
Safety net for front window	•	•
Lower wiper with intermittent control	•	•
Anti-vandalism kit	•	•
Specific key	•	•
Undercarriage		
Full track guard	•	•
Track shoes		
600/700/800/900 mm with triple grousers	•	•
Track shoes 700 mm with double grousers	•	•
Digging equipment		
Boom: 6.0 m monoblock, heavy duty	•	
Boom: 5.95 m 2 piece boom	•	
Boom: 10.2 m monoblock, long reach	•	
Arm: 2.5 m HD, 2.97 m HD, 3.6 m	•	
Arm: 7.85 m, long reach	•	
Boom: 5.95 m 2 piece boom		•
Boom: 10.2 m monoblock, long reach		•
Arm: 2.55 m HD, 3.05 m HD, 3.7 m		•
Arm: 7.9 m, long reach		•
Linkage with lifting eye	•	•
Service		
Tool kit, daily maintenance	•	•
Tool kit, full scale	•	•
Automatic lubrication system	•	

SELECTION OF VOLVO OPTIONAL EQUIPMENT



VOLVO CONSTRUCTION EQUIPMENT

Volvo Construction Equipment is different. Our machines are designed, built and supported in a different way. That difference comes from an engineering heritage of over 180 years. A heritage of thinking first about the people who actually use the machines. About how to help them be safer, more comfortable, more productive. About the environment we all share. The result of that thinking is a growing range of machines and a global support network dedicated to helping you do more. People around the world are proud to use Volvo.

Not all products are available in all markets. Under our policy of continuous improvement, we reserve the right to change specifications and design without prior notice. The illustrations do not necessarily show the standard version of the machine.

VOLVO

Volvo Construction Equipment
www.volvoce.com

Ref. No 20026771-E
2013.05
Volvo, Global Marketing

English-21
EXC